



Education
@ glasshouse

2025



Principal Partner of the
Education @ Glasshouse Program

Welcome to another **CREATIVE YEAR** AT THE GLASSHOUSE

The Glasshouse team works with our local schools and education providers to cooperatively deliver a wide range of creative learning opportunities to our young people. An education rich in creative arts maximises opportunities for learners to engage with innovative thinkers and leaders and to experience the arts both as audience members and as artists. Such an education is vital to students' success as individuals and as members of society, emphasising not only creativity and innovation, but also the values of broad cultural understanding and social harmony that the arts can engender.

A growing body of international and Australian research demonstrates the multiple benefits of an arts-rich education from an early age. Over and above the obvious development of individual creativity and self-expression, school based arts participation can increase learners' confidence and motivation, thereby improving school attendance rates, academic outcomes and the wellbeing and life skills of children and young people.

So come and celebrate the arts and creativity in all its forms with us in 2025.

Bec Washington
Theatre Program Curator

Bridget Purtill
Gallery Curator

Glasshouse Port Macquarie
(02) 6581 8888

education@glasshouse.org.au

Corner Clarence & Hay Streets
Port Macquarie, NSW, 2444

A Booking Request Form is required for all school visits to the Glasshouse.

Booking forms can be downloaded from the Glasshouse website:

glasshouse.org.au/learn

Please be aware that workshops and performances book out quickly.

DISCLAIMER

Every effort is made to ensure that performance dates, times, prices and other information contained in this brochure are correct at time of printing. Program dates and times are subject to change, amendment, cancellation and postponement without notice. When booking and purchasing tickets, it is advisable to confirm that there have been no variations to the schedule.



GLASSHOUSE PORT MACQUARIE



The Glasshouse is supported by the NSW
Government through Create NSW

A MESSAGE FROM OUR

PARTNER

The Education @ Glasshouse Program shares similar values with Coastline, in that we both exist to support the people who live, work and interact in the communities in which we operate.



Peter Townsend
CHIEF EXECUTIVE OFFICER

Coastline sought the opportunity to partner with the Education @ Glasshouse Program in 2019 following the launch of the Coastline Cubs and Kickstart accounts, and the Coastline Cubs School Visit Program.

Since its inception, the partnership has been successful in building positive relationships with our local schools and highlights our commitment to supporting education outside of the classroom and within the broader community.

We understand the importance of giving students access to valuable learning experiences which inspire both creativity and innovation.

As Principal Partner, this exciting opportunity allows us to play an important role in providing access for students to participate in the unique and creative events hosted within the program.

Coastline has been operating in Port Macquarie since 2001 and in May 2022 we relocated to our flagship store within the Settlement City Shopping Centre.

The Glasshouse is a premier destination showcasing world class productions in performing arts that boosts the local economy and tourism sector in the Greater Port Macquarie region.

Coastline is excited to contribute to the longevity and sustainability of the Education @ Glasshouse Program, and we have committed to a further three years as the Principal Partner of the Education @ Glasshouse Program.



COASTLINE CREDIT UNION IS COMMITTED TO GROWING LOCAL YOUTH PARTICIPATION IN ARTS.

Schools and teachers are encouraged to apply to the Coastline Community Foundation to help assist with costs associated with attendance to Education @ Glasshouse events. The Coastline Community Foundation is just one of the ways Coastline shows tangible support to our local communities – by aiding organisations that benefit the local communities.

COMMUNITY / ARTS AND CULTURE / FINANCIAL WELLBEING / ENVIRONMENT



Since its inauguration in 2001, the Coastline Community Foundation has given back over \$2,500,000 to not-for-profit groups within the Macleay, Hastings and Manning Valleys. The Foundation provides financial support to assist with costs directly associated with accessing the Education @ Glasshouse Program.*



SOME OF THE WAYS IN WHICH THE FOUNDATION CAN HELP YOUR SCHOOL INCLUDE:

- TICKET COSTS
- WORKSHOPS BEING DELIVERED ON SCHOOL CAMPUSES
- COSTS OF TEACHER'S PROFESSIONAL DEVELOPMENT OPPORTUNITIES
- ASSIST WITH COSTS ASSOCIATED WITH SPECIAL NEEDS / DISADVANTAGED GROUPS



For further information on how we can support your school or to apply, visit coastline.com.au or email sponsorship@coastline.com.au


COASTLINE
Where your goals are ours

* To apply for a Coastline Community Foundation grant for the Glasshouse Education Program, your application must clearly indicate which 2025 Education @ Glasshouse activities you will be attending. **The Coastline Community Foundation Board is responsible for assessing each application and determining the final allocation of Foundation grants.



**EXHIBITION
PRIMARY/SECONDARY**

**8 February to
13 April**

SUITABLE FOR
Stages 2 - 6

CURRICULUM LINKS
Visual Arts, Creative
Arts, Photography,
Video and Digital
Imaging

COST
Free

**SUGGESTED
ACTIVITIES**

ON DEMAND: Guided or
Self-Guided Tours

Image: *The Hidden Theatre*
installation, Bundanon Trust Art
Museum, 2022

Glasshouse Regional Gallery presents

THE HIDDEN THEATRE

TIM GEORGESON AND WILLIAM BARTON

The Hidden Theatre is a sound, film and photographic installation by Australian filmmaker and artist Tim Georgeson and composer, performer and proud Kalkadunga man, William Barton. It offers a personal account of the Bundanon land and waterscapes in New South Wales, Australia.

Working together for the first time, Georgeson and Barton undertook an artistic residency at Bundanon in 2021, composing, recording and experimenting in response to Wodi Wodi Country. They continued this close collaboration offsite, weaving together their responses through an ongoing exchange of material.

Anchored by Barton's compositions, Georgeson's films are edited in distinct acts, revealing unseen interactions between sunlight, moonlight, fog and wind. Together, sound and image form a meditation on the ancient knowledge and histories held within the earth, water and skies of this place.

The Hidden Theatre is accompanied by a selection of Georgeson's photographs that capture the immediacy of the natural phenomena experienced at Bundanon.

Tim Georgeson creates immersive cinematic spaces, through film, sound and photography where environments and bodies are transformed through the gaze of unexpected visual-musical ecologies.

His creative insight into the human condition gives his work a unique perspective at the boundaries of art and documentary, where through photography and film, he captures complex dynamics in contemporary life and merges these found moments with musical design and storytelling in ground-breaking collaborations, most notably with Australian Indigenous artists.

Georgeson has won World Press Photo, Leica Camera and National Geographic awards. He has exhibited in solo and group exhibitions in France, UK, Japan, Holland, Canada, the USA and Australia. His work is held in the collections of the National Portrait Gallery of Australia, Art Bank, Bundanon Trust Art Museum and the Australian Museum, as well as in regional galleries, corporate collections and private collections internationally.

Georgeson is represented by Olsen Gallery, Sydney.

William Barton is Australia's leading didgeridoo player as well as a highly esteemed composer, instrumentalist and vocalist.

William first learnt the instrument from his uncle, Arthur Peterson, an Elder of the Wanyyi, Lardil and Kalkadunga people and was working from an early age with traditional dance groups, fusion/rock/jazz bands, orchestras, string quartets and mixed ensembles.

Throughout his diverse career he has forged a path in the classical musical world from the London, Berlin and Bremer Philharmonic Orchestras to historic events at Westminster Abbey for Commonwealth Day 2019, at Anzac Cove in Gallipoli and the Beijing Olympics.

His awards include Winner of Best Original Score for a Mainstage Production at the 2018 Sydney Theatre Awards and Winner of Best Classical Album with an ARIA for *Birdsong At Dusk* in 2012. In 2021 he was the recipient of the prestigious Don Banks Music Award from the Australia Council and the Limelight Australian Artist of the Year: Critic's Choice. In 2022 he was included in *The Australian's The List: 100 Arts & Culture influencers*.

Image: Tim Georgeson, *Theatre 3*, 2021



Image: *The Hidden Theatre* installation, Bundanon Trust Art Museum, 2022



- TIME OUT



cdpKids

PERFORMANCE PRIMARY

Wednesday
12 March
10am & 12pm

SUITABLE FOR
Foundation - Stage 1

CURRICULUM LINKS
Drama, Music, Dance,
Visual Arts, English

DURATION
50 minutes (no interval)

COST
\$20

**"COLOURFUL,
ENGAGING,
CHARMING."**

THE HUFFINGTON POST

Glasshouse Port Macquarie and CDP Kids present

THE VERY HUNGRY CATERPILLAR SHOW

Created by Jonathan Rockefeller

Based on Eric Carle's Books

"and – pop! – out of the egg came a tiny and very hungry caterpillar."

One of the most-read and famous children's books of all time, *The Very Hungry Caterpillar* emerges off the page in a masterful theatrical experience for children 18 months+ and their adults.

Created by Jonathan Rockefeller, the production features a menagerie of over 75 magical puppets, including the star of the show – The Very Hungry Caterpillar – and an Australian cast who bring these beloved books to life on stage.

Alongside *The Very Hungry Caterpillar*, the show features three other Eric Carle stories – *Brown Bear, Brown Bear, What Do You See?*, *Ten Little Rubber Ducks*, and *The Very Busy Spider*.

The team behind the Australian tours of *The Gruffalo*, *Spot*, and *The 13, 26, 52, 78 & 91-Storey Treehouses* will excite, educate and entertain new readers and first-time theatre-goers, while those who grew up with these books will delight in experiencing one of the most popular children's books ever written. Don't miss out!



Glasshouse Port Macquarie and Junkyard Beats present

JUNKLANDIA

JUNKLANDIA is an engaging and interactive spectacle of drumming, dance, circus and comedy guaranteed to excite and inspire kids and families!

Siblings from the faraway planet 'JUNKLANDIA' embark on an EPIC mission to Earth to teach the Junklandian ways of music and creative recycling! With a hilarious language of gibberish & rhythm, this show is accessible to any age and nationality.

The show ends with an incredible 'JUNK Orchestra' where each audience member, equipped with a recycled instrument, will come together to create a one-of-a-kind Junkyard Band!

You won't look at recycled materials the same way after watching this show!

"Talented performers, quality show, meaningful message."

- KERRY, MOTHER OF 2,
KYNETON TOWN HALL



PERFORMANCE PRIMARY/SECONDARY

**Tuesday 8 April
10am & 12pm**

SUITABLE FOR
Stages 1 - 5

CURRICULUM LINKS
Music, Drama,
Environment

DURATION
75 minutes (no interval)

COST
\$20

WARNINGS
Loud noises, light and
smoke effects





**EXHIBITION
PRIMARY/SECONDARY**

12 April to 1 June

SUITABLE FOR

Stages 1 – 6

CURRICULUM LINKS

Visual Arts, Creative
Arts

COST

Free

**SUGGESTED
ACTIVITIES**

ON DEMAND: Guided or
Self-Guided Tours
Workshops

Image: **Nathalie Gautier-Hartog**, *River*
installation. Photo by Andrew Halliday
courtesy Wagga Wagga Art Gallery

Glasshouse Regional Gallery presents

RIVER: NATHALIE GAUTIER-HARTOG

Nathalie Gautier-Hartog is a multi-disciplinary French born artist living and working on Darkinjung Country.

Over the past few decades, Gautier-Hartog has developed projects addressing human connections with the environment, underpinned by her own associations and relationship with the landscapes of France and Australia. Within her work she also considers the epochs of discoverers in the past and those of today. The *River* exhibition embodies an emblematic metaphor for the very notion of her journey.

The river is a metaphor for time not only for its flow but also for the history embedded in it. People with memories understand the water rises, breaks through, drowns, and brings chaos and disorder. Rivers are a formidable energy responsible for engraving much of the landscape. Over time, human interference with their natural courses has had detrimental impacts on the ecology and the landscape in which it survives.

The river system has inspired Gautier-Hartog to experiment with different materials, surfaces and mediums. She uses the earth and plant pigments; found along the rivers' bed, as an ink to randomly print the river rocks, by rolling the rocks on the paper they act as the footsteps left behind by generations of migrants.

Glasshouse Regional Gallery presents

5TH TAMWORTH TEXTILE TRIENNIAL, RESIDUE + RESPONSE

Residue + Response: Tamworth Textile Triennial builds on the tradition of the Tamworth Fibre Textile collection which first began in 1973, showcasing 50 years of contemporary textile artists. As we unfold from the recent global events, we reflect on our connection with others, our shared history and possible futures. The 2023 Textile Triennial is a celebration of 50 years of the National Textile Collection promoting and sustaining the unique cultural heritage associated with both the history and technology of textile practice.

5th Tamworth Textile Triennial

RESIDUE+
RESPONSE
Connecting histories and futures

This project has been assisted by the Australian Government's Visions of Australia and Regional Arts Fund programs.



EXHIBITION PRIMARY/SECONDARY

19 April to 13 July

SUITABLE FOR
Stages 1 - 6

CURRICULUM LINKS

Visual Arts, Creative Arts, Textiles and Design

COST

Free

SUGGESTED ACTIVITIES

ON DEMAND: Guided or Self-Guided Tours
Workshops
Education Kit Available

Image: **Sophie Honess**, *Rest* (detail), 2023

Made with vintage pre-owned materials, wool, latch hook mat



PERFORMANCE SECONDARY

Friday 2 May
11am

SUITABLE FOR
Stages 5 - 6

CURRICULUM LINKS
Ancient History, Drama,
Physical Theatre

DURATION
60 minutes (no interval)

COST
\$20

WARNINGS
Suitable for ages 15+
Language

NCM

Glasshouse Port Macquarie and NCM present
A Slightly Isolated Dog production of:

THE TROJAN WAR

Following the success of *Don Juan* and *Jekyll & Hyde*, award-winning NZ production company, A Slightly Isolated Dog, brings you their flirtatiously fun comedy: *The Trojan War*!

This explosive and hilarious work uses a cast of faux-French performers to create a joyful, interactive celebration. Theatrical magic, wicked pop songs and fierce wit is combined to create a delightful romp through this classic twisted tale.

When Paris is born, it is prophesied that he will bring the destruction of the city. To avoid this fate, he is sent away to be sacrificed. But this starts a series of events that will inevitably lead to the destiny his parents were so desperately trying to avoid. *The Trojan War* tells the story of the tragic fall of Troy. It's a raucous celebration of our ridiculous lives: using this classic tale of gods and heroes to playfully explore questions around the current chaos of our times.



ARTS COUNCIL
NEW ZEALAND TOI AOTEAROA
creativenz



Glasshouse Port Macquarie presents
An Australian Chamber Orchestra production

THE PRINCESS, THE PEA (AND THE BRAVE ESCAPEE)

**An original play by Finegan Kruckemeyer with music by
Bryony Marks**

Isabella was born with everything. Daughter of the grandest king, surrounded by the greatest wealth, held in the highest castle. Her life is easy, but Isabella is not content, and dreams of escaping palace life. One day, in the midst of a storm, when everyone is looking elsewhere, she finds her chance. Her amazing super senses guide her on a journey filled with daring feats and surprising friendships.

This stunning theatrical production comes alive with classical music performed live by ACO musicians. It's perfect for audiences of all ages who need a reminder that they can be brave, even if they feel scared of the unknown.

Written by award-winning playwright Finegan Kruckemeyer (*Magic Beach*, *Are We There Yet?*), with an original score by Bryony Marks (*Barracuda*, *Summer Heights High*), and directed by Tim McGarry (*There's a Sea in My Bedroom*, *Boy Swallows Universe*).

PERFORMANCE PRIMARY

Friday 9 May
10am & 11.45am

SUITABLE FOR
Stages 1 - 2

CURRICULUM LINKS
Music, Drama

DURATION
38 minutes + post show
Q&A

COST
\$20

***This is an exciting
new ACO families
production that
will ignite your
imagination and
heart.***

ACO Australian
Chamber
Orchestra

PRINCIPAL PARTNER

Wesfarmers Arts

GOVERNMENT PARTNERS

Leisure & Community

 **Creative
Australia**

 **NSW**

TOURING PARTNER
 **ARTS
ON
TOUR**



LIVESTREAM SECONDARY

**Thursday 22 May to
Sunday 25 May**

SUITABLE FOR
Stages 5 - 6

CURRICULUM LINKS

Literacy, Politics,
English, Current Affairs

DURATION

60 minute livestream
sessions

COST

\$6 per student per
session
\$18 per student per
Day Pass

Glasshouse Port Macquarie and
Mid North Coast Co-Operative Library Service present

SYDNEY WRITERS' FESTIVAL LIVESTREAM

Sydney Writers' Festival returns to Port Macquarie in 2025.

One of Australia's best-loved forums for literature, ideas and storytelling, *Sydney Writers' Festival* will stream its headline events from Sydney direct to Glasshouse Studio over four days.

Students will be stimulated and engaged by conversations, debates and discussions, as the Festival brings the world's finest authors to them in real time. As well as hearing new ideas from great thinkers, students have the opportunity to participate in Q&A sessions, sending questions direct to the Sydney stage.

Students can be booked through the Education Program or can book independently of their school at the Glasshouse Box Office by showing their high school student ID card.

**Full program will be announced
in March 2025 and will be
emailed direct to those that
have registered their interest.**





Glasshouse Port Macquarie and That Science Gang present
YOU ARE A DOUGHNUT

Join biology teachers Oesoph A. Gus and Dewey Dean for a brilliantly grosstacular tour of the human digestive system — with sketches, songs, and sensational science.

Along the way you'll encounter a frenzy of enzyme-powered ping pong balls, sing along with a rainbow collection of poop puppets, and witness the weirdest poetry performance you've ever seen. It's a fast-paced variety hour, with each new digestive destination inspiring a wonderfully unusual performance.

★★★★★

"...a lesson on the human digestive system in the most fun, action-packed way you could possibly imagine"

— BEN STEFANOFF, GLAM ADELAIDE 2022



That
**Science
 Gang!**

**PERFORMANCE
 PRIMARY/SECONDARY**

**Thursday 22 May &
 Friday 23 May
 10am & 12.30pm**

SUITABLE FOR
 Stages 2 - 4

CURRICULUM LINKS
 Science, Nutrition and
 Wellness

DURATION
 60 minutes (no interval)

COST
 \$20

WARNINGS
 Some loud noises,
 flashing lights and haze
 effects

NCM



"The theme of hope rises up like the human spirit within the script."

– ARTSHUB



**PERFORMANCE
SECONDARY**

**Monday 16 June
11am**

SUITABLE FOR
Stages 5 - 6

CURRICULUM LINKS
Drama, Science,
HSIE, Environment

DURATION
80 minutes (no interval)

COST
\$20

WARNINGS

Contains the use of
strobe lighting. Some
elements of the show's
design may affect
people with coeliac's
disease. Recommended
for 15+



**BELVOIR ST
THEATRE**

Glasshouse Port Macquarie and Belvoir St Theatre present

SCENES FROM THE CLIMATE ERA

Written by David Finnigan

Directed by Carissa Licciardello

Supported by Oranges & Sardines, Patty Akopiantz and
Justin Punch

Massive artificial reefs. Mirror clouds. Zombie mice.

Beaches where once there were none.

Travelling the world when aeroplanes are gone.

How we deal with big, breathtaking ideas – and the crazy
excitement of living in hope.

It's sixty-five short scenes – comic, tragic, and everything in
between. Jam-packed with info, humanity and truth, but never
wagging its finger in your face, *Scenes From The Climate Era* is a
play about now. About the choices we made yesterday, and the
difficult beauty of tomorrow.



**ARTS
ON
TOUR**



Glasshouse Regional Gallery presents

LOOKING BACK MOVING FORWARD... BRINGING THE PAST WITH US

NSW Mid North Coast Fibre Artists Network

Looking Back Moving Forward... bringing the past with us is an exhibition by the NSW Mid North Coast FIBRE ARTISTS NETWORK (FAN), exploring traditional to contemporary textile methods using domestic garments, native plant eco dyeing, references to climate change, applique and printing, basket work from materials collected locally plus the incorporation of found objects.

This exhibition will invite visitors to touch the threads of history and embrace the journey while collectively moving forward, carrying the essence of our heritage into the vibrant tapestry of the future.

Artists involved: Pauline Cosgrove, Vana Ford, Ute Kardinahl, Kerry Wheeldon, Barbara Huntington, Gloria Muddle, Joanne Steanes, Susie Williams, Jan Kiek, Jan Herrera and Louise Earnshaw.



FIBRE ARTISTS NETWORK INC.

education@glasshouse.org.au

EXHIBITION PRIMARY/SECONDARY

**19 July to
21 September**

SUITABLE FOR
Stages 1 - 6

CURRICULUM LINKS
Visual Arts, Creative
Arts, Textiles and Design

COST
Free

**SUGGESTED
ACTIVITIES**
ON DEMAND: Guided or
Self-Guided Tours
Workshops

Image: **Vana Ford** and
Kerry Wheeldon: Untitled (detail),
woven and stitched fibres, 2019

**WORKSHOP
SECONDARY**

**Friday 1 August
9.30am & 4pm**

SUITABLE FOR

Intermediate to
advanced dance
students

CURRICULUM LINKS

Contemporary Dance

DURATION

90 minutes

COST

\$25

In the Glasshouse Studio

Maximum 20 students
per workshop

Glasshouse Port Macquarie presents

SYDNEY DANCE COMPANY WORKSHOPS

Join Sydney Dance Company's professional dancers for an exclusive workshop experience where you will learn repertoire from the Company's current season. You will also be guided through a technical warm-up and composition tasks.





Glasshouse Port Macquarie presents

SYDNEY DANCE COMPANY SNEAK PEEK

Join Sydney Dance Company for an insightful *Sneak Peek* before the evening main stage performance. During this engaging 'fly on the wall' experience, you will have exclusive behind the scenes access to a Sydney Dance Company rehearsal.

- View the last 15 minutes of a company warm-up class
- Engage in a 15 minute talk and Q&A with Sydney Dance Company's Rehearsal Director who will share contextual information about the creative processes explored to create the work
- View 30 minutes of a professional dance rehearsal

Students can book independently of their school from February 2025. Must have valid student ID.

SNEAK PEEK
PRIMARY/SECONDARY

Saturday 2 August
2pm

SUITABLE FOR
Stages 3 - 6

CURRICULUM LINKS
Contemporary Dance

DURATION
60 minutes (no interval)

COST
\$14

2025

★★★★

"A complete delight."

- JO LITSON, DAILY TELEGRAPH

**PERFORMANCE
PRIMARY****Tuesday 12 August
1pm****Wednesday
13 August
9.30am & 11.30am****SUITABLE FOR**
Foundation - Stage 3**CURRICULUM LINKS**
English, Drama, Music,
Personal Development,
Environment,
Australiana**DURATION**
50 minutes (no interval)**COST**
\$20**WARNINGS**
Theatrical hazemonkey theatre
baa co.Glasshouse Port Macquarie presents a
Monkey Baa Theatre Company production**JOSEPHINE WANTS
TO DANCE**Based on the book by Jackie French and Bruce Whatley
Adapted by Eva Di Cesare, Sandie Eldridge and Tim McGarry**A hilarious musical about the importance of believing
in yourself and realising your dreams and... a dancing
kangaroo!**

This delightful musical is a must-see!

Josephine is a kangaroo who loves to dance. Her little brother, Joey, tells her kangaroos don't dance, they hop - but Josephine continues to point her toes and leap through the air. When a ballet troupe comes to the sleepy town of Shaggy Gully, Josephine desperately wants to dance like the ballerinas in pink tutus and silk ballet shoes.

On the day of the first performance the Ballet Company is in trouble. The prima ballerina twists her ankle and the understudy has a splinter in her toe. Who can dance the lead role? Josephine's talents are called upon to help save the day. Can she do it, and more importantly, does it matter that she's a kangaroo?





Glasshouse Port Macquarie presents

JOSEPHINE WANTS TO DANCE STUDENT WORKSHOPS

Delivered by Monkey Baa Theatre Company

Unlock your imagination and experience the magic of theatre in Monkey Baa's *Josephine Wants To Dance* workshop. Explore the themes of the play and gain skills in improvisation, playbuilding and storytelling in a fun-filled drama workshop.

Workshops are delivered at your school campus, a few weeks prior to the performance.

Only available to schools that have booked to see a performance.

Schools to register their interest with dates/times confirmed in 2025.

WORKSHOP PRIMARY

SUITABLE FOR
Early Stage 1 – Stage 3

CURRICULUM LINKS
English, Drama, Music,
Personal Development,
Environment,
Australiana

DURATION
Grade K – 2: 45 minutes
Grade 3 – 6: 60 minutes

COST
Free

6 workshops available

Maximum of 30
students per workshop

Photos by Heidrun Lohr from 2018
national tour, featuring Rebecca
Hetherington, Chloe Dallimore,
Amanda Laing and Hayden Rodgers.



NEW EXUBERANCE CONTEMPORARY AUSTRALIAN TEXTILE DESIGN

TEXTILES IN ART
DESIGN
AND FASHION

EXHIBITION PRIMARY/SECONDARY

**30 August to
23 November**

SUITABLE FOR
Stages 1 - 6

CURRICULUM LINKS
Visual Arts, Creative
Arts, Textiles and Design

COST
Free

**SUGGESTED
ACTIVITIES**
ON DEMAND: Guided or
Self-Guided Tours
Workshops
Education Kit Available

JamFactory is excited to launch a new touring exhibition project bringing together contemporary design, art, and fashion through textiles.

Textile design today is a vibrant boundary-blurring creative field. By its very nature, it cross-pollinates. Moving through disciplines – graphic, furniture and product design, fashion and the visual arts – it manifests as surface patterning, material experimentation and transfiguration, storytelling and conceptual ideas.

Despite the hardships of recent years, Australian textile-based practices are flourishing. Makers are finding renewed confidence in community-driven interest, co-creation, and inclusivity. Collaborations in the fashion industry are on the increase, forged by creatives such as Romance Was Born, Iordanes Spyridon Gogos, Grace Lillian Lee and initiatives such as First Nations Fashion + Design. The skyrocketing visibility within First Nations practices is partly due to the passionate vision of new enterprises and reinforced by the meaningful and covetable textile designs being produced by artists in the Top End and remote art centres and collectives. In line with these developments, and urgent sustainability concerns, the artisanal ethos is gaining agency.

New Exuberance celebrates the work of more than 30 textile creatives and includes 10 commissioned furniture pieces produced by designers associated with JamFactory to acknowledge the rich diversity of textile-based practices in contemporary art, design and fashion in this country now.



Insitu: Nixi Killick, *Cryptic Frequency Augmented Reality Activated*, scuba knit



Insitu: WAH WAH Australia x RAMESH 2022, Australian merino wool. Photo by Lexi Laphor

Featuring Bábbarra Women's Centre, Frida Las Vegas, Grace Lillian Lee, Hannah Gartside, Ikuntji Artists, Iordanes Spyridon Gogos, Jemima Wyman, Kate Just, Lisa Waup X Verner, Nina Walton, Nixi Killick, Paul Mccann, Romance Was Born, The Social Studio X Among Atem X Romance Was Born, Tiwi Design, Vita Cochran, Wah-Wah Australia.

Curator Meryl Ryan.



Vita Cochran, *Groupe des Femmes (after SD)* 2019-20, rag rug: cut woollen garments and fabric hooked into cotton backing

Jam
Factory



Government of
South Australia



THE VISUAL ARTS AND CRAFT STRATEGY



Australian Government
Visions of Australia

Goodland
DESIGN+ART+MAKING

New Exuberance: contemporary Australian textile design is a JamFactory touring exhibition supported by the Visions of Australia touring program, an Australian Government program aiming to improve access to cultural material for all Australians.



PERFORMANCE SECONDARY

Saturday 4 October
7.30pm

SUITABLE FOR:

Stages 5 - 6

CURRICULUM LINKS

English, Drama, Physical
Theatre

DURATION

150 minutes
(includes interval)

COST

Student \$35
Teacher \$74.90
Allocation of 30
education tickets
available until 30 April,
after which time they
will be released to the
general public for sale

Glasshouse Port Macquarie presents Bell Shakespeare's

ROMEO & JULIET

By William Shakespeare. Director Peter Evans

Did my heart love till now?

Act 1, Scene 5

After a chance meeting, an intense but forbidden love is ignited between two young lovers, Romeo and Juliet. Despite the unending, violent feud between their families, they will risk everything to be together.

This raw portrayal of *Romeo & Juliet* will envelop you in the passion, the intensity and the heartbreak of Shakespeare's most evocative tragedy.

Peter Evans' critically acclaimed production of the greatest love story ever told returns to stages in 2025. Introducing the magnetic Madeline Li as Juliet, this exquisite production is not to be missed.

**BELL
SHAKESPEARE**



Bell Shakespeare is assisted by the Australian Government through Creative Australia, its principal arts investment and advisory body, and by the NSW Government through Create NSW.

WARNINGS

Please be advised that Shakespeare's original play contains depictions of violence, murder, sexual references, and suicide. It's recommend that the plot and themes of *Romeo & Juliet* are discussed with students prior to attending. Recommended for 14+.

MANHATTAN SHORT

THE WORLD'S FIRST GLOBAL FILM FESTIVAL

Glasshouse Port Macquarie presents

MANHATTAN SHORT FILM FESTIVAL

Manhattan Short Film Festival is a one-of-a-kind worldwide event, taking place in over 500 venues across six continents.

The final films represent the best short films from over 1,000 submissions from around the world, covering an extraordinary range of genres including drama, science fiction, suspense, animation and comedy.

By virtue of their selection by Manhattan Short, each short film is automatically Oscar-qualified.

A must-see film festival for all students interested in drama, film and entertainment.

Screened in the Glasshouse Studio



education@glasshouse.org.au

FESTIVAL SECONDARY

**Friday 24 October
10am**

SUITABLE FOR
Stages 4 - 6

CURRICULUM LINKS
Film, Film Production,
Drama, Comedy,
Animation, Science,
Space, Fantasy, Science
Fiction

DURATION
150 minutes
(includes 20 minute
interval)

COST
\$20

**ONE WORLD.
ONE WEEK.
ONE FESTIVAL.**

GLASSHOUSE REGIONAL GALLERY

REGIONAL CREATIVE SHOWCASE

2025

**EXHIBITION
PRIMARY/SECONDARY**

**15 November, 2025
to 8 February, 2026**

SUITABLE FOR
Stages 4 - 6

CURRICULUM LINKS
Visual Arts, Creative
Arts

COST
Free

**SUGGESTED
ACTIVITIES**
ON DEMAND: Guided or
Self-Guided Tours

**Showcasing a selection
of local senior high school
and TAFE creatives**

The *Regional Creative Showcase 2025* celebrates the diversity and vibrancy of local talent within our art, design, and creative industries from a selection of our senior high school and TAFE Creative Industry students. This wonderful exhibition will include a broad range of approaches and expressive forms inclusive of the Cultural Arts, Design, Digital, Fashion, Textiles and Visual Arts.

Supporting regional arts in our community.

WYNNE PRIZE 2025

Glasshouse Regional Gallery presents

WYNNE PRIZE 2025

An Art Gallery of NSW touring exhibition

The \$50,000 *Wynne Prize* is judged by the trustees of the Art Gallery and is awarded to the best landscape painting of Australian scenery or figurative sculpture.

The *Wynne Prize* is Australia's oldest art prize. It was established following a bequest by Richard Wynne and was first awarded in 1897 to mark the official opening of the Art Gallery at its present site.

Following the exhibition at the Art Gallery in Sydney, the *Wynne Prize* will tour to four venues in regional NSW.

The *Wynne Prize 2025* regional tour is proudly supported by the NSW Government through Create NSW's Blockbusters Funding initiative.

EXHIBITION PRIMARY/SECONDARY

**29 November, 2025
to 25 January, 2026**

SUITABLE FOR
Stages 1 - 6

CURRICULUM LINKS
Visual Arts, Creative
Arts

COST
Free

**SUGGESTED
ACTIVITIES**
ON DEMAND: Guided or
Self-Guided Tours
Workshops
Education Kit Available

Art
Gallery
NSW

This project is proudly supported
by the NSW Government through
Create NSW's Blockbusters
Funding initiative.



An Art Gallery of New South Wales touring exhibition



GALLERY ON DEMAND

Programming requested by you and specifically created for you and your students.

FREE SELF-GUIDED TOURS

Self-guided tours are encouraged, however we ask that you complete an Online Booking Form, so that we can ensure that your visit does not clash with other activities or events. Additionally this will give us time to provide you with any available educational resources.

GUIDED TOURS

Join our Gallery educators on an hour long guided tour, a fun and informative way to get excited about art. These interactive tailored tours assist in building confidence in discussing ideas, give in-depth insight into exhibitions on display, and include art theory as well as interactive age-specific exercises.

**SUITABLE FOR
PRIMARY/SECONDARY**

DURATION
60 minutes

COST
\$5 per student

EXHIBITION-BASED WORKSHOPS AND TOURS

If you are focusing on a particular exhibition, specific theme or curriculum/syllabus outcome, we can tailor a program to your needs. These custom-made sessions can accommodate your students and help to create a dynamic excursion and engaging art experience.

**SUITABLE FOR
PRIMARY/SECONDARY**

DURATION
120 minutes (30 minute Gallery tour, 90 minute workshop)

COST
\$15 per student

**Tour dates and times
are negotiable**

MONDAY EDUCATION DAY
Book your ON DEMAND programs on a Monday and have the gallery to yourself

HERITAGE IN A BOX

Heritage in a Box is a free educational resource that has been developed as an aid for teachers in the instruction of Port Macquarie's colonial history in accordance with Stage 2 of the HSIE syllabus.

The kit includes a comprehensive teacher's guide providing historical detail, ideas for student activities, classroom posters, reference books, DVDs and excursion ideas. In addition to the kit is a box of historic artefacts.

Schools are able to book out the box of museum objects for use in the classroom.

Why not use this in association with a visit to the Glasshouse to view the archaeological remains and a stop at the nearby Port Macquarie Museum?

ON DEMAND

**RESOURCE
PRIMARY**

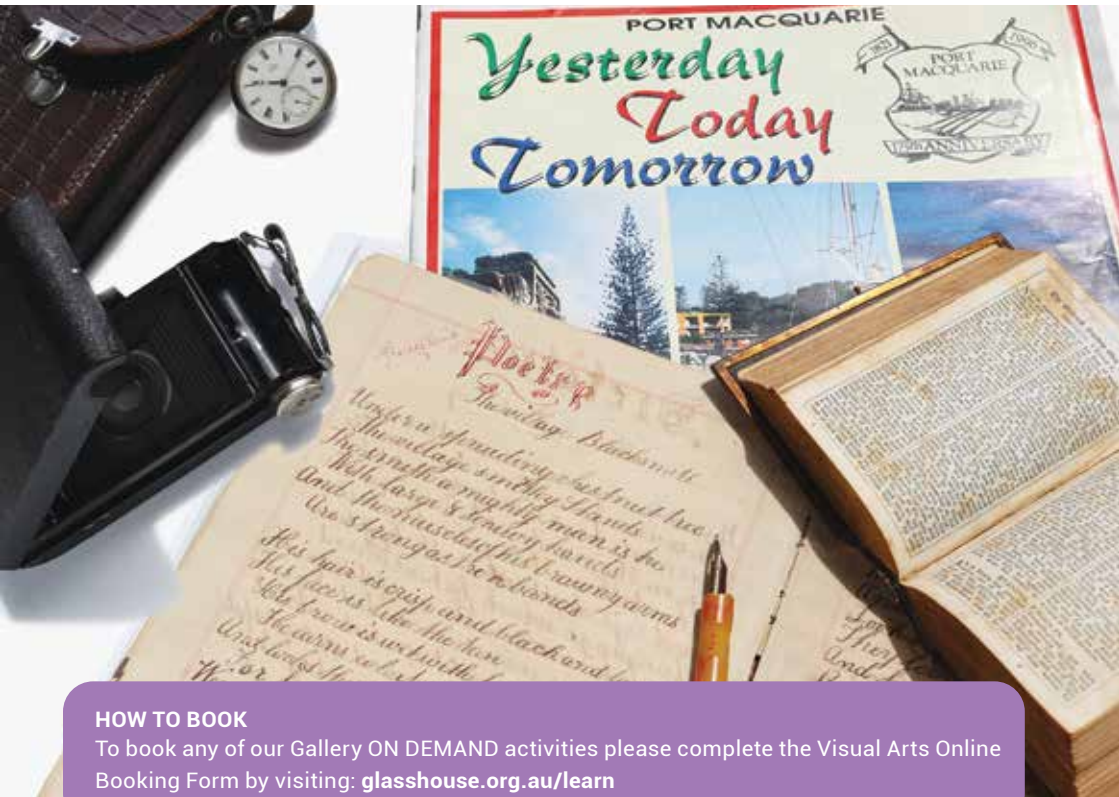
SUITABLE FOR
Stage 2

CURRICULUM LINKS

HSIE

COST

Free



HOW TO BOOK

To book any of our Gallery ON DEMAND activities please complete the Visual Arts Online Booking Form by visiting: glasshouse.org.au/learn

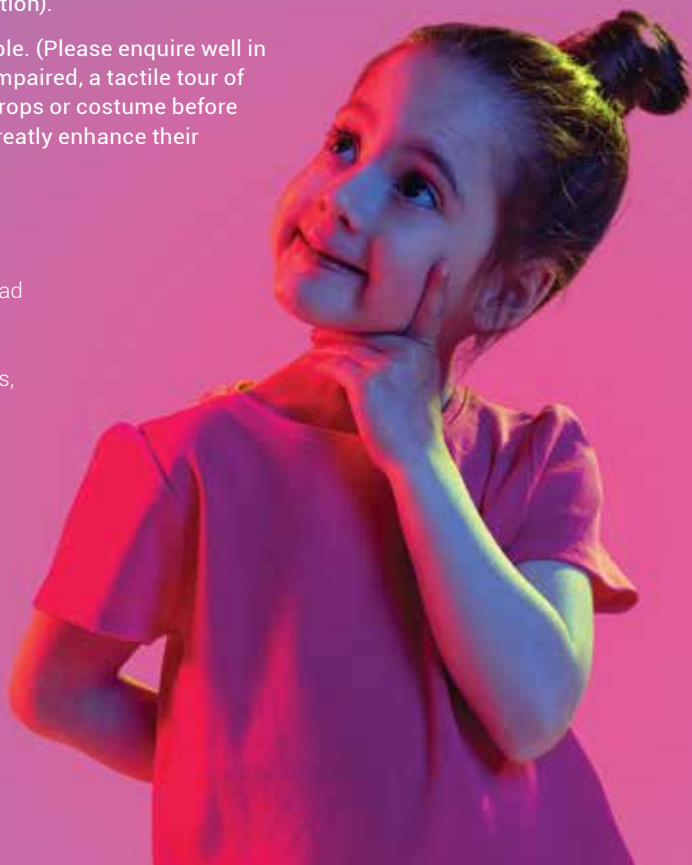
RELAXED PERFORMANCES

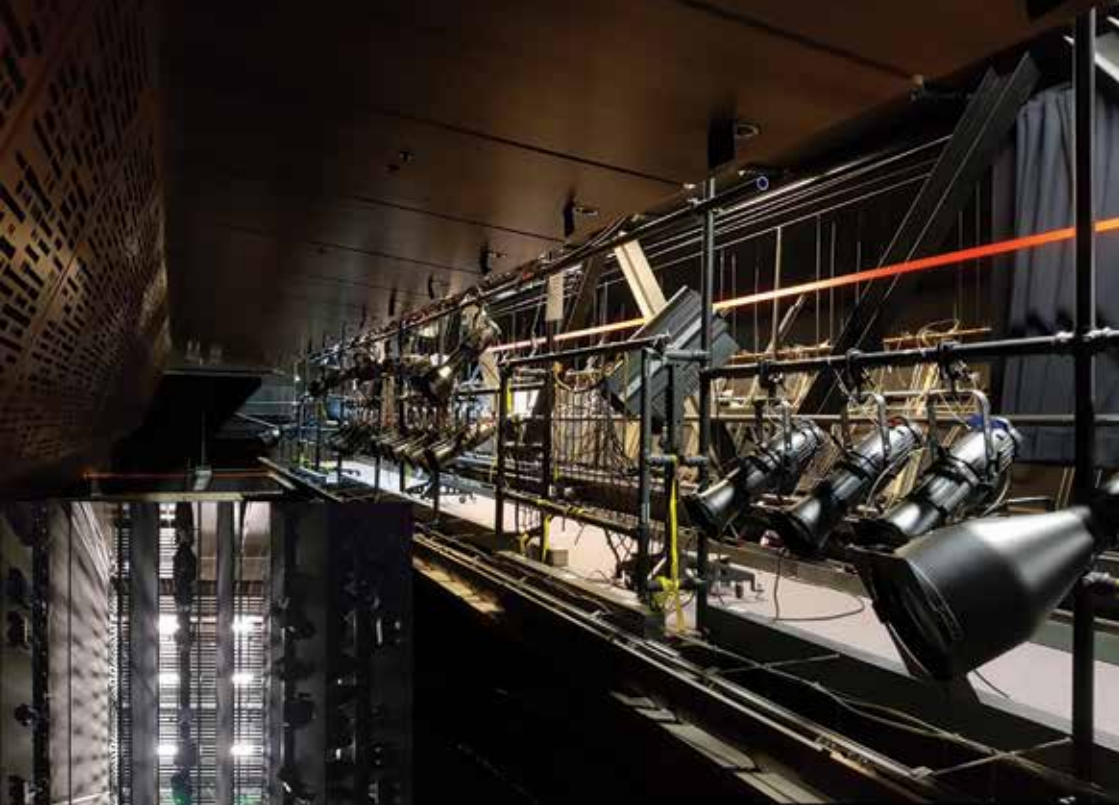
The Glasshouse will work with producers to offer *Relaxed Performances* where possible. It's all about communicating with us in advance so we can have the appropriate conversations with the touring company. Relaxed Performances may include:

- House lights up 20% so it's not too dark.
- Reduced level of sound – kids can bring their noise canceling headphones to reduce noise if required.
- Special attention from ushers to assist carers – the Level 2 Foyer can be used as a "Chill Out Space" for those who feel overwhelmed or need to take a break.
- The "Crying Room" can be used for students who feel overwhelmed, but do not want to miss any part of the show (the stage is visible with an audio loop to the room).
- AUSLAN interpreted performances may be arranged (advance notice is required to allow an AUSLAN Interpreter to familiarise themselves with the production).
- Tactile Tours may be available. (Please enquire well in advance. If a child is sight impaired, a tactile tour of some elements of the set, props or costume before the production starts can greatly enhance their experience).

RESOURCES

Resources are available to download from the Glasshouse website to assist you with your visit. Where available, these include worksheets, activities and Education Kits.





BEHIND THE SCENES TOURS

Curious about how an arts and entertainment venue like the Glasshouse operates behind the scenes? Our tailored tours provide students with a one-of-a-kind learning experience.

Led by our expert guides, students will gain exclusive insights into the theatre's intricate backstage workings. From live demonstrations of our cutting-edge fly system and lighting effects to exploring the Glasshouse Studio's innovative seating setup, students will witness the magic of theatre production first-hand.

The tour covers key areas such as the stage, dressing rooms, lighting bridges and orchestra pit. Students will discover the logistics of bump-in/bump-out processes and get a glimpse of the venue's rich heritage displays.

Designed for educational groups, our 90 minute tours are paced to ensure maximum engagement while offering an enriching, behind-the-scenes adventure.

Please contact us on education@glasshouse.org.au

TOURS PRIMARY/ SECONDARY

90 minutes

\$10 per student

Max 30 students

Bookings essential

Contact us to discuss
suitable dates and times

Note: For safety reasons, enclosed
footwear must be worn.

education@glasshouse.org.au



coastline CUBS SCHOOL VISIT

P R O G R A M

We offer a 'Coastline Cubs School Visit Program' which helps educate young students on early financial literacy and offers a hands-on learning experience in our branch network.

School students are invited to a local Coastline store and during their in-store visit, students experience transactional based activities like using the automatic coin counting machine and spinning money through the note counter. They are guided

through the branch environment and participate in fun money-based learning activities assisted by Coastline staff. Each student is presented with a Cubs promo gift bag and certificate at the conclusion of the excursion.

The Coastline Cubs School Visit Program correlates with outcomes in the NSW Education Standards Authority Mathematics syllabus and the Early Years Learning Framework.



17 - 21 FEBRUARY 2025

YOU CHOOSE

YOUTH ROAD SAFETY PROGRAM

YOU CHOOSE is Australia's youth-led mission to change teen social behavioural paradigms from the impulsivity and passivity of 'luck' to the empowerment and accountability of choice.

The program is designed with inputs from professional educators, teen behavioural academics and survey data for profound cut-through to teens; inspiring enduring leadership in each participant as an outspoken peer advocate who expects good choices from themselves, their friends and their family.

The program activates students' hearts for social mission, challenging them to protect their loved ones and their community by rejecting the misguided myth that reckless choices are 'a part of growing up'. They are invited to embrace the awesome opportunity to be the first generation to permanently change this mindset.

YOU CHOOSE is much more than an annual



presentation. It is a long-arc student-led program backed by a formal pedagogy, aligned to the Personal and Social Capability objectives of the Australian Curriculum. YOU CHOOSE provides teachers and students with lesson, workshop, activity, personal & group enquiry, leadership and assessment resources for use in-class throughout the year as part of the school wellbeing or pastoral care schedule.

One student. One friendship group. One family.
One school. One community at a time.

INTENTIONS - CHOICES - ACTIONS



To register your school's interest for 2025 visits, please email us at social@coastline.com.au


COASTLINE
Where your goals are ours

PLANNING YOUR VISIT

Access educational resources and information to assist with planning your visit to the Glasshouse on our website. A venue and safety information sheet is available to assist you with planning your excursion.

Please advise the Glasshouse of any special needs or seating requirements prior to your visit so we can ensure every student has a great experience.



KEEP IN TOUCH

Keep in touch with the latest education news and events through the Glasshouse Education E-News. To join the list, please email your details to education@glasshouse.org.au



HOW TO BOOK

A Booking Request Form is required for all visits to the Glasshouse.

Please visit: glasshouse.org.au/learn

For **Visual Arts bookings**, please complete the Visual Arts Online Booking Form.

For **Performing Arts bookings**, please download the Performing Arts Booking Form and email the completed form to education@glasshouse.org.au or drop it off to us in person.

Please be aware that workshops and performances book out quickly. We have a broad network of schools who travel long distances and ask that schools located within close proximity be flexible with their booking times.

DISCLAIMER

Every effort is made to ensure that performance dates, times, prices and other information contained in this brochure are correct at time of printing. Program dates and times are subject to change, amendment, cancellation and postponement without notice. When booking and purchasing tickets, it is advisable to confirm that there have been no variations to the schedule.



TERM ONE

The Hidden Theatre Exhibition	6
The Very Hungry Caterpillar Show	8
JUNKLANDIA	9

TERM TWO

River: Nathalie Gautier-Hartog Exhibition	10
Residue + Response: Tamworth Textile Triennial Exhibition	11
The Trojan War	12
The Princess, The Pea (and The Brave Escapee)	13
Sydney Writers' Festival	14
You Are A Doughnut	15
Scenes From The Climate Era	16

TERM THREE

Looking Back Moving Forward... bringing the past with us Exhibition	17
Sydney Dance Company Workshops	18
Sydney Dance Company Sneak Peek	19
Josephine Wants To Dance	20
Josephine Wants To Dance Student Workshops	21
New Exuberance Exhibition	22

TERM FOUR

Romeo & Juliet	24
Manhattan Short Film Festival	25
Creative Regional Showcase 2025 Exhibition	26
WYNNE PRIZE 2025 Exhibition	27

ON DEMAND

Gallery ON DEMAND	28
Heritage In A Box	29
Relaxed Performances	30
Behind The Scenes Tours	31
Coastline Cubs School Visit Program	32
YOU CHOOSE Youth Road Safety Program	33
Planning Your Visit	34






COASTLINE
Where your goals are ours

Principal Partner of the
Education @ Glasshouse Program


GLASSHOUSE PORT MACQUARIE

(02) 6581 8888
education@glasshouse.org.au
 Corner Clarence & Hay Streets
 Port Macquarie, NSW, 2444


**PORT MACQUARIE
HASTINGS
COUNCIL**


**NSW
GOVERNMENT**

The Glasshouse is supported
by the NSW Government
through Create NSW