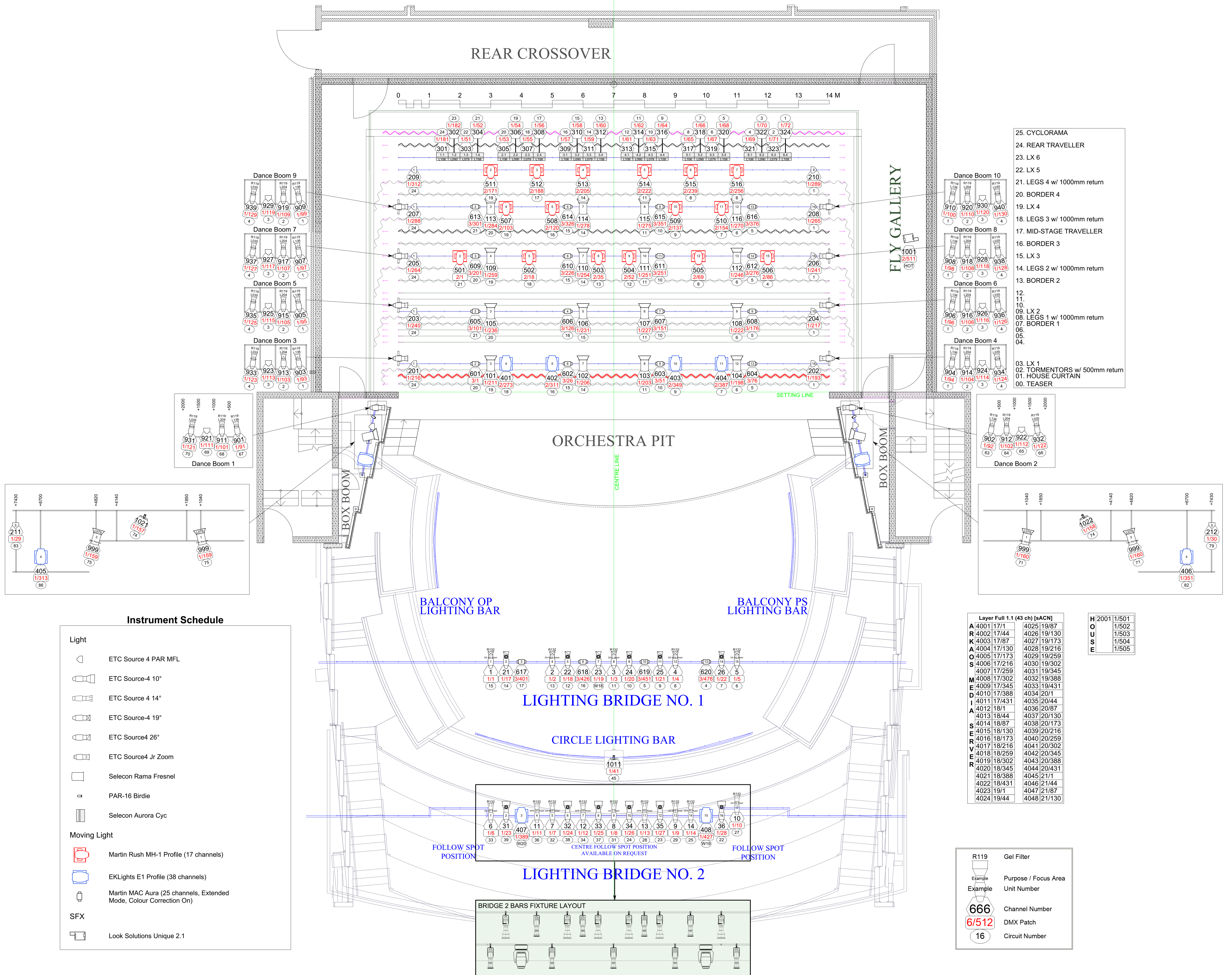


GENERAL NOTES

1. Touring consoles may connect into our sACN network if desired. IP range is 10.200.9.101-255.
2. The Glasshouse runs Arkaos MediaMaster 6 on PC. 48 video layers can be controlled via sACN on DMX universes 17-21.
3. Fixtures on Bridge 2 are spread across a high and a low bar, see plan for proper fixture layout.
4. The Centre Followspot position can be made available on request. This position usually has unit 9 (centre upstage wash) intruding.
5. Unit 402 is out for repair and is currently not available.

DANCE BOOMS

1. Dance Booms are available on request - usual placement is as shown on this plan.
2. Boom heights are measured from the stage floor to the rung unless otherwise noted. Heights for booms 3-10 are taken from those noted for booms 1 and 2.
3. Booms 1 and 2 are in a fixed position, while booms 3-10 are mobile.



25. CYCLORAMA
24. REAR TRAVELLER
23. LX 6
22. LX 5
21. LEGS 4 w/ 1000mm return
20. BORDER 4
19. LX 4
18. LEGS 3 w/ 1000mm return
17. MID-STAGE TRAVELLER
16. BORDER 3
15. LX 3
14. LEGS 2 w/ 1000mm return
13. BORDER 2
12. LX 2
11. LX 1
10. LX 2
09. LEGS 1 w/ 1000mm return
07. BORDER 1
06. LX 1
05. LX 1
04. LX 1
03. LX 1
02. TORMENTORS w/ 500mm return
01. HOUSE CURTAIN
00. TEASER

Layer Full 1.1 (43 ch) [sACN]		H 2001 11501	
A	4001 17/1	4025 19/87	1/502
R	4002 17/44	4026 19/130	1/503
K	4003 17/87	4027 19/173	1/504
A	4004 17/130	4028 19/216	1/505
O	4005 17/173	4029 19/259	
S	4006 17/216	4030 19/302	
	4007 17/259	4031 19/345	
M	4008 17/302	4032 19/388	
E	4009 17/345	4033 19/431	
D	4010 17/388	4034 20/1	
I	4011 17/431	4035 20/44	
A	4012 18/1	4036 20/87	
R	4013 18/44	4037 20/130	
S	4014 18/87	4038 20/173	
E	4015 18/130	4039 20/216	
R	4016 18/173	4040 20/259	
R	4017 18/216	4041 20/302	
V	4018 18/259	4042 20/345	
R	4019 18/302	4043 20/388	
	4020 18/345	4044 20/431	
	4021 18/388	4045 21/1	
	4022 18/431	4046 21/44	
	4023 19/1	4047 21/87	
	4024 19/44	4048 21/130	

R119	Gel Filter
Example	Purpose / Focus Area
Example	Unit Number
666	Channel Number
6/512	DMX Patch
16	Circuit Number

Instrument Schedule

Light

- ETC Source 4 PAR MFL
- ETC Source-4 10"
- ETC Source-4 14"
- ETC Source-4 19"
- ETC Source-4 26"
- ETC Source-4 Jr Zoom
- Selecon Rama Fresnel
- PAR-16 Birdie
- Selecon Aurora Cyc

Moving Light

- Martin Rush MH-1 Profile (17 channels)
- EKLights E1 Profile (38 channels)
- Martin MAC Aura (25 channels, Extended Mode, Colour Correction On)

SFX

- Look Solutions Unique 2.1