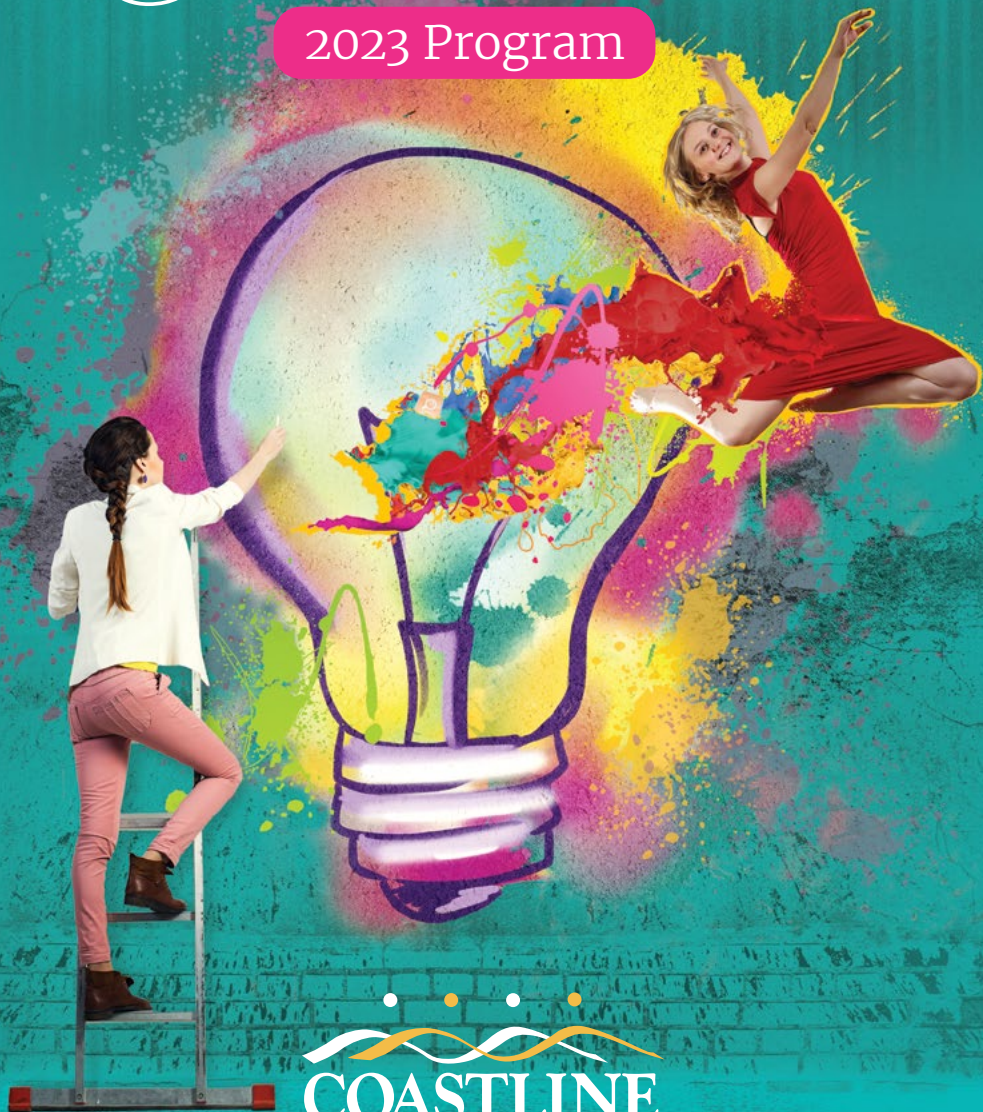


# EDUCATION @ GLASSHOUSE

2023 Program



  
**COASTLINE**

*Where your goals are ours*

Principal Partner of the  
Education @ Glasshouse Program

# Welcome to another **creative year** at the glasshouse!

The Glasshouse team works with our local schools and education providers to cooperatively deliver a wide range of creative learning opportunities to our young people. We hope that these experiences inspire the development of creative adaptable minds - minds that will find solutions to the complex problems that we face, both now and into the future.

So come and celebrate the arts and creativity in all its forms with us in 2023.

## **Bec Washington**

Event Services Coordinator

## **Bridget Purtill**

Gallery Curator

---

## **Glasshouse Port Macquarie (02) 6581 8888**

education@glasshouse.org.au

Corner Clarence & Hay Streets,  
Port Macquarie

## **Please check our website**

A Booking Request Form is required for all school visits to the Glasshouse. Booking forms can be downloaded from the Glasshouse website:

[www.glasshouse.org.au/Learn](http://www.glasshouse.org.au/Learn)

---

### **DISCLAIMER**

Every effort is made to ensure that performance dates, times, prices and other information contained in this brochure are correct at time of printing. Program dates and times are subject to change, amendment, cancellation and postponement without notice. When booking and purchasing tickets, it is advisable to confirm that there have been no variations to the schedule.

## **Bookings essential**

Please be aware that workshops and performances book out quickly.



**GLASSHOUSE PORT MACQUARIE**



**PORT MACQUARIE  
HASTINGS  
C O U N C I L**



**NSW  
GOVERNMENT**

The Glasshouse is supported by the NSW  
Government through Create NSW



A message from our  
**PARTNER**

At Coastline, we proudly offer the same range of personal and business banking services and products that any big bank can, with one huge difference. We are customer owned and 100% committed to investing in our community.

*Peter Townsend*  
GENERAL MANAGER

The Education @ Glasshouse Program shares similar values with Coastline in that we both exist to support the people who live, work and interact in the communities in which we operate.

Coastline sought the opportunity to partner with the Education @ Glasshouse Program following the launch of the Coastline Cubs and Kickstarts accounts, along with our Coastline Cubs School Visit Program.

The three-year partnership commenced in 2019, following the closure of the Glasshouse in 2020 due to the COVID-19 Pandemic. Coastline and the Glasshouse worked to extend the partnership for a further year, and we look forward to assisting the Glasshouse in delivering another exciting program in 2023.

The partnership continues to present opportunities to build positive relationships with our local schools and highlights our commitment to support education outside of the classroom and within the broader community.

We understand the importance of giving students access to valuable learning experiences which inspire both creativity and

innovation. As Principal Partner, this exciting opportunity allows us to play an important role in providing access for students to participate in the unique and creative events hosted within the program, which promotes cultural diversity.

Coastline has been operating in Port Macquarie since 2001, and in May 2022, we relocated to our new flagship store within the Settlement City Shopping Centre. The Glasshouse is a premier destination showcasing world-class productions in performing arts that boost our local economy and tourism sector in the Greater Port Macquarie region. Coastline are excited to contribute to the longevity and sustainability of the Education @ Glasshouse Program.



**COASTLINE**  
*Where your goals are ours*





COASTLINE  
**community**  
FOUNDATION

Coastline Credit Union (CCU) is committed to growing local youth participation in arts. **Schools and teachers are encouraged to apply to the Coastline Community Foundation to help assist with costs associated with attendance at Glasshouse Education events.**

The Coastline Community Foundation (CCF) is just one of the ways CCU shows tangible support to our local communities – by aiding organisations that benefit the local communities. The CCF provides funding to the following focus areas:

- Community • Financial Literacy
- Arts and Culture • Environment



**ST JOSEPH'S PRIMARY SCHOOL, KEMPSEY RECEIVES \$25,000  
TO FUND THEIR NEW OUTDOOR LEARNING AND PLAY AREA.**



Since its inauguration in 2001, the CCF has given back over \$1,000,000 to not-for-profit groups within the Macleay, Hastings and Manning Valleys. The CCF will provide financial support to assist with costs directly associated with accessing the Education @ Glasshouse Program.

**Some of the ways in which the CCF can help your school include:**

- Bus Subsidies;
- Ticket Costs;
- Workshops being delivered on school campuses;
- Costs of Teacher's Professional Development Opportunities; and
- Assist with costs associated with special needs / disadvantaged groups.

For further information on how we can support your school or to apply, please visit our website [coastline.com.au](http://coastline.com.au) or contact us at [sponsorship@coastline.com.au](mailto:sponsorship@coastline.com.au)



\* To apply for a CCF grant for the Glasshouse Education Program, your application must clearly indicate which 2023 Education @ Glasshouse activities you will be attending.

\*\*The Coastline Community Foundation Board is responsible for assessing each application and determining the final allocation of Foundation grants.



# term One



## **CREATIVITY**

allows you to be who you want to be



Principal Partner of the  
Education @ Glasshouse Program



# Dance Makers Collective

## School Holiday Program

Dance Makers Collective (DMC) and Glasshouse Port Macquarie are partnering to deliver a new school holiday program in January 2023, providing 20 high school aged students an opportunity to co-develop a short dance work utilising tools developed by DMC.

Workshops will run over 5 days and be facilitated by artists from DMC alongside local performer and artist, Lucy Frost.

### WORKSHOPS

Secondary

**Monday 16 to Friday  
20 January**

### SUITABLE FOR

Stages 5 & 6

### CURRICULUM LINKS

Dance/Drama

FREE

Maximum limits per  
school will apply.



This project is supported by the NSW Government through Create NSW.



## EXHIBITION

Primary/Secondary

**28 January -  
23 April**

## SUITABLE FOR

All ages

## CURRICULUM LINKS

Creative Arts, Visual  
Arts, Visual Design, HSEI

FREE

## SUGGESTED ACTIVITIES

Tour, Workshop



Sydney Printmakers

# ORIGIN: The Place Where Something Begins

## Sydney Printmakers

Origin: the place where something begins

This major printmaking exhibition by Sydney Printmakers presents diverse interpretations of the meaning of 'origin'. Over 40 artists, including some of Australia's leading printmakers, creatively explore the theme through various print-based media.

As the longest existing printmaking group in Australia, Sydney Printmakers has a reputation for excellence and innovation. For over sixty years Sydney Printmakers has continued to evolve in a contemporary art context. The group has consistently engaged with national and international print communities through exhibitions, collaborations and exchanges.

Sydney Printmakers' portfolios are held in the Art Gallery of New South Wales and the National Gallery of Australia. They have exhibited extensively throughout Australia and internationally including New Zealand, Canada, China, Chile, Norway and Japan.

Image credit: **Salvadore Gerardi**, *Shadowlines 2* (detail), 2021, combined relief and carborundum unique state, 28x158cmx20cm, open book format presentation



# Are we there yet?

Alison Lester

LIVE ON  
STAGE



Glasshouse Port Macquarie presents a  
CDP Kids production

## Are We There Yet?

A play by Finegan Kruckemeyer  
Based on the book by Alison Lester

“The year I turned eight, Mum and Dad took us on a trip around Australia. Luke, Billy and I missed school for the whole winter term.”

Join 8 year old Grace and her family on their adventurous and often funny expedition around Australia!

Following CDP’s successful national tour of *Magic Beach*, Alison Lester AM’s classic book comes to life on stage with songs, fun, (and quokkas!) for children aged 3-10 and their adults.

From the team behind *The Gruffalo* and *The 13-, 26-, 52-, 78- and 91-Storey Treehouses*, this new adaptation from multi-award winning playwright Finegan Kruckemeyer is a celebration of family, love, and the diversity and beauty of Australia.

### PERFORMANCE

Primary

Thursday 23 March,  
1.15pm & Friday  
24 March, 11.30am

### SUITABLE FOR

Preschool, Early Stage 1,  
Stage 1

### CURRICULUM LINKS

English, Drama, Music,  
Personal Development,  
Australiana

### DURATION

55 minutes (no interval)

### COST

\$17.00



This project has been assisted by the Australian Government through the Australia Council, its arts funding and advisory body.

This project is supported by the NSW Government through Create NSW.



# term TWO

**CREATIVITY IS ...**  
intelligence having fun

Albert Einstein

  
**COASTLINE**  
Where your goals are ours

Principal Partner of the  
Education @ Glasshouse Program



# ART IN CONFLICT

## An Australian War Memorial Touring Exhibition

*Art in Conflict* is a new touring exhibition of contemporary art from the collection of the Australian War Memorial. Three major new bodies of work debut in this exhibition: two recent official war art commissions – Susan Norrie (Iraq, 2016) and Megan Cope (Middle East, 2017) – and a landmark commemorative work by Angelica Mesiti.

*Art in Conflict* is a showcase of diverse responses to war, the exhibition includes more than seventy paintings, drawings, films, prints, photography and sculptures. Leading Australian artists are represented, such as Khadim Ali, Rushdi Anwar, eX de Medici, Denise Green, Richard Lewer, Mike Parr and Ben Quilty. Aboriginal and Torres Strait Islander art, a collection priority for the Memorial in recent years, is featured, with works by Tony Albert, Paddy Bedford, Robert Campbell Jr, Michael Cook, Shirley Macnamara and Betty Muffler.

Contemporary artists' responses to conflict bring to light untold stories, reveal neglected histories and deepen our understanding of Australia's experience of conflict, both past and present.

### EXHIBITION

Primary/Secondary

**20 May - 23 July**

### SUITABLE FOR

Years 9–12

### CURRICULUM LINKS

Creative Arts, Visual Arts, HSIE, English

FREE

### RESOURCES

Education kit available

### SUGGESTED ACTIVITIES

Tour, Workshop, Contemporary Practice

Express your interest



**Robert Campbell Jr**, *The past & present of 200 years*, 941H x 1233 L x 45 W  
AWM2020\_721\_1--1, Image courtesy of the Australian War Memorial





**SYDNEY  
WRITERS  
FESTIVAL**  
LIVE & LOCAL

**LIVE AND IN  
REAL TIME  
DIRECT TO THE  
GLASSHOUSE  
STUDIO**

## **LIVESTREAM**

Secondary

**Friday 26, Saturday  
27 & Sunday 28 May**

## **SUITABLE FOR**

Stages 5-6

## **CURRICULUM LINKS**

Literacy, Politics,  
English, Current Affairs

## **DURATION**

1 hour per livestream  
session

## **COST**

\$6 per student per  
session, \$18 per student  
Day Pass

Glasshouse Port Macquarie and  
Port Macquarie-Hastings Libraries present

# **Sydney Writers' Festival Livestream**

Sydney Writers' Festival returns to Port Macquarie in 2023.

One of Australia's best-loved forums for literature, ideas and storytelling, Sydney Writers' Festival will stream its headline events from Sydney direct to Glasshouse Studio over 3 days, with 4 sessions per day.

Students will be stimulated and engaged by conversations, debates and discussions, as the Festival brings the world's finest authors to them in real time. As well as hearing new ideas from great thinkers, students have the opportunity to participate in Q&A sessions at each event, sending questions direct to the Sydney stage.

Students can book through the Education Program or at the Glasshouse Box Office by showing their high school student ID card.

**Full program will be announced closer to the Festival dates and will be emailed direct to those that have registered their interest.**

\*all ticket holders will receive the program when released.



**MID NORTH COAST  
CO-OPERATIVE  
LIBRARY SERVICE**



Glasshouse Port Macquarie &  
NCM Present Arthur Miller's

## Death Of a Salesman

A Hearth Theatre Production

Rediscover one of the greatest plays of the 20th Century as  
Hearth Theatre presents an intimate new production of Arthur  
Miller's heartbreaking masterpiece *Death of a Salesman*.

Featuring an extraordinary ensemble of Melbourne actors and  
directed by Christopher Tomkinson (*The Crucible* for Sport For  
Joye), renowned actor Paul English (*Henry V* and *As You Like It*  
for Pop-Up Globe, and *Ivanov* for fortyfivedownstairs) takes on  
the iconic and monumental role of Willy Loman, "a salesman  
with his feet on the subway stairs, and his head in the stars."

"For me, Willy's journey as an Everyman trying to make a  
living in precarious work, battling with the System and with  
himself, still speaks to us today, and embodies our shared  
humanity," says English. "His fracturing mind is a dark jungle  
for an actor to explore – and to find treasures within."

*The proceeding of this  
production is subject  
to funding approval by  
Playing Australia.*



### PERFORMANCE

Secondary

**Friday 26 May,  
11am + Q&A**

### SUITABLE FOR

Stages 5 & 6

### CURRICULUM LINKS

English, Literature,  
Theatre Studies, Drama

### DURATION

210 minutes  
(including interval)

### COST

\$19.50

### RESOURCES

Teachers Study Guide  
"Different Every  
Night", to explore the  
revolutionary acting  
methodology developed  
by renowned English  
theatre maker, Mike  
Alfreds.



Glasshouse Port Macquarie and NCM present

## The Alphabet of Awesome Science

### A scientific race through the alphabet...

Join professors Lexi Con and Noel Edge (the Word Nerd and the Science Freak) for a thrilling voyage through the alphabet — where great big chewy sesquipedalian words inspire mind-blowing scientific surprises.

Professor Lexi Con has curated a curious collection of her favourite words (one for every letter of the alphabet) with each word providing Professor Noel Edge with an inspirational jumping off point for 26 quirky scientific demonstrations — that squish and squirt, float and fly, erupt and explode.

Together, this dad-joke quipping, prank-pulling pair of polished professors strut their stuff in a performance that's equal parts explosive, messy, spectacular, hilarious, fascinating, and gross.

And if things weren't exciting enough, every show is completely different, with students determining the order in which the letters are revealed and explored.

Plus, did we mention, this is a race? This plucky pair of professors have just 52 minutes to complete their alphabetical, scientific countdown. That's just 2 minutes per experiment!

Will they make it in time...?

**Check out the Education Resources that can be used in the classroom - [www.alphabetscience.com/schools](http://www.alphabetscience.com/schools)**

#### PERFORMANCE

Primary/Secondary

**Tuesday 6 June &  
Wednesday 7 June,  
10am & 12.30pm**

#### SUITABLE FOR

Stages 1 and above

#### CURRICULUM LINKS

Chemical Sciences,  
Earth & Space Sciences,  
Physical Sciences,  
Chemical Sciences,  
Biological Sciences

#### DURATION

60 minutes  
(no interval)

#### COST

\$18.50

Studio Images - Scott Reynolds  
Live Images - Mason Digital

*'Best Children's Event'*

- Weekly Award





SCIENCE AT THE FRINGE AWARD

*'This is one of the best children's shows I have seen... well produced, exciting and educational!'*

Stage Whispers



THE **ALPHABET** OF  
**A W E S O M E**  
**SCIENCE**

NCM





# term Three

**CREATIVITY IS ...**  
being yourself



**COASTLINE**  
*Where your goals are ours*

Principal Partner of the  
Education @ Glasshouse Program

# ARTEXPRESS

## ARTEXPRESS

ARTEXPRESS is an annual exhibition featuring a selection of outstanding student artworks developed for the art-making component of the HSC examination in Visual Arts in NSW.

The works selected for display in ARTEXPRESS 2023 at the Glasshouse Regional Gallery include a broad range of approaches and expressive forms, including ceramics, collection of works, documented forms, drawing, painting, photomedia, printmaking, sculpture, and time-based forms.

These impressive and highly resolved bodies of work demonstrate the creativity and resilience of students, providing insight into the concepts and issues important to them.

ARTEXPRESS is a joint project between the NSW Department of Education (DoE) and the NSW Education Standards Authority (NESA).



### EXHIBITION

Primary/Secondary

1 July - 17 September

### SUITABLE FOR

Years 7-12

### CURRICULUM LINKS

Creative Arts, Visual Arts, Visual Design

FREE

### RESOURCES

Education kit available

### SUGGESTED ACTIVITIES

Tour  
Workshop  
HSC intense art making classes

Teachers and students facilitated by a NESA representative

\*for the HSC and Teachers workshops please express your interest and we will be in contact



# SYDNEY DANCE COMPANY



## WORKSHOP

Secondary

**Friday 11 August,  
9.30am & 4pm**

### SUITABLE FOR

Intermediate to  
Advanced dance  
students

### CURRICULUM LINKS

Contemporary Dance

### DURATION

90 minutes

### COST

\$20.00

In the Glasshouse studio.

Max 17 students per  
workshop

## Sydney Dance Company Workshops

Join Sydney Dance Company's professional dancers for an exclusive workshop experience where you will learn repertoire from the Company's current season. You will also be guided through a technical warm-up and composition tasks.



# Sydney Dance Company Sneak Peek

Join Sydney Dance Company for an insightful Sneak Peek before the evening main stage performance. During this engaging 'fly on the wall' experience, you will have exclusive behind the scenes access to a Sydney Dance Company rehearsal.

- View the last 15 minutes of a company warm-up class
- Engage in a 15 minute talk and Q&A with Sydney Dance Company's Rehearsal Director who can share contextual information about the creative processes explored to create the works
- View 30 minutes of a professional dance rehearsal

Students can book independently of their school from Feb 2023. Must have valid student ID.

## SNEAK PEEK

Secondary

**Saturday 12 August,  
1.30pm**

**SUITABLE FOR**  
Stages 3 - 6

**CURRICULUM LINKS**  
Contemporary dance

**DURATION**  
60 minutes  
(no interval)

**COST**  
\$12.00



*A rocking, outback  
adventure to find the  
great hiccup cure*



**PERFORMANCE**

Primary/Secondary

**Wednesday 30  
August, 10am &  
12.30pm**

**SUITABLE FOR**

Preschool, Early Stage 1,  
Stage 1, Stage 2

**CURRICULUM LINKS**

English, Puppetry,  
Australian Fauna,  
Drama, Music,  
Personal Development,  
Environment

**DURATION**

45 minutes  
(no interval)

**COST**

\$18.00

Image: Thomas McCammon

**Glasshouse Port Macquarie and  
Windmill Theatre Company present**

# Hiccup!

**A Windmill Theatre Company Production by  
Jude Henshall and Ellen Steele**

It's a perfect, balmy night in the outback. A sleep-deprived camper, a cheeky quokka and an emu with a penchant for creating wild inventions, awake to discover that a koala has come down with a stubborn and ear-shatteringly loud case of the hiccups.

The three embark on an epic journey through the night that sees them frantically eat, sing and invent their way towards a cure before the sun comes up.

*Hiccup* is a hilarious rocking musical extravaganza about working together, finding friendship and how to, once and for all, stop the hiccups.

*"Hiccup is a winner... The kids were with them every step of the way, singing and clapping along, cheering the triumphs and lamenting the disappointments, and loving every bit of it."*

- The Advertiser







Glasshouse Port Macquarie and the Australian Chamber Orchestra present

## ACO Collective: Ecstatic Dances

Directed by Matthew Truscott

A frequent performer on the world's most celebrated concert hall stages, British violinist Matthew Truscott leads ACO Collective in a thrilling program of dances from across the ages. Matthew is concertmaster and leader of two of Europe's most renowned orchestras and ACO are thrilled to announce his return to Australia in this series of concerts across Queensland and New South Wales.

Matthew and ACO Collective will perform a tapestry of dance music for string orchestra, showcasing the vitality and virtuosity of this incredible ensemble. Energy permeates every turn, from the Baroque elegance of Purcell's England, to the rhythmic intensity of Stravinsky's iconic ballet Petrushka, to Bartok's show stopping Divertimento for String Orchestra.

**This highly interactive performance is perfect for upper primary and lower secondary school students, featuring excerpts of pieces from the main stage concert, interspersed with educational content and opportunities for students to ask questions and engage with performers.**

### PERFORMANCE

Upper Primary/  
Secondary

**Monday**  
**18 September,**  
**11am + Q&A**

### SUITABLE FOR

Upper Stage 2 to Stage 4

### CURRICULUM LINKS

Music

### DURATION

60 minutes  
including Q&A

### COST

\$12.50

# term FOUR



**CREATIVITY ...**  
opens minds

  
**COASTLINE**  
*Where your goals are ours*

Principal Partner of the  
Education @ Glasshouse Program



# WILLIAM KENTRIDGE: I AM NOT ME, THE HORSE IS NOT MINE

## An Art Gallery of New South Wales Touring Exhibition

One of the most powerful voices in art today, William Kentridge emerged as an artist during the apartheid regime in South Africa. Grounded in the violent absurdity of that period in his country's history, his artworks draw connections between art, ideology, history and memory. They reveal the ways in which ideas and images echo across time and between different cultures.

Kentridge's eight-channel video work *I am not me, the horse is not mine* is among the artist's most ambitious moving image works and arguably the most significant work by the artist in an Australian museum collection. It premiered at the Biennale of Sydney in 2008 and was gifted to the Art Gallery of New South Wales by Anita and Luca Belgiorno-Nettis in 2017.

**William Kentridge**, *I am not me, the horse is not mine*, 2008 (still), Art Gallery of New South Wales, gift of Anita Belgiorno-Nettis AM and Luca Belgiorno-Nettis AM 2017, donated through the Australian Government's Cultural Gifts Program © William Kentridge

### EXHIBITION

Primary/Secondary

**23 September -  
26 November**

### SUITABLE FOR

K-12

### CURRICULUM LINKS

Creative Arts, Visual Arts, HSIE, English, Photography, Digital Media

FREE

### RESOURCES

Accompanying resources  
Education kit available

### SUGGESTED ACTIVITIES

Tour, Workshop

Art  
Gallery  
NSW



# MANHATTAN SHORT

## THE WORLD'S FIRST GLOBAL FILM FESTIVAL

### FESTIVAL

Secondary

**Thursday 19 October,  
10am**

### SUITABLE FOR

Years 7 - 12

### CURRICULUM LINKS

Film, Film Production,  
Drama, Comedy,  
Animation, Science,  
Space, Fantasy, Science  
Fiction

### DURATION

150 minutes  
(including 7 minute  
comfort break)

### COST

\$12.50

Glasshouse Port Macquarie presents

## Manhattan Short Film Festival

*Manhattan Short Film Festival* is one of a kind, a worldwide event taking place in over 400 venues across six continents.

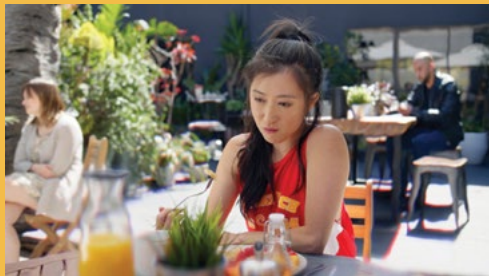
The final films represent the best short films from over 1,000 submissions from around the world, covering an extraordinary range of genres including drama, science fiction, suspense, animation and comedy.

By virtue of their selection by *Manhattan Short*, each short film is automatically Oscar-qualified.

A must-see film festival for all students interested in drama, film and entertainment.

*Screened in the Glasshouse Studio.*





**ONE WORLD. ONE WEEK. ONE FESTIVAL**

2023 is the 40th Anniversary of  
this iconic Australian book.



## PERFORMANCE

Primary

**Monday 6 November,  
1pm and Tuesday 7  
November, 9.30am &  
11.30am**

### SUITABLE FOR

Suitable for Preschool,  
Stages 1 - 2

### CURRICULUM LINKS

English, Drama, Music,  
Personal Development,  
Environment,  
Australiana

### DURATION

50 minutes (no interval)

### COST

\$18.00

Illustrations copyright  
© Julie Vivas 1983

Glasshouse Port Macquarie and  
Monkey Baa Theatre Company present

## Possum Magic

**Based on the book by Mem Fox and Julie Vivas  
Adapted by Eva Di Cesare and Sandra Eldridge.  
Directed by Sandra Eldridge**

Using a clever, nuanced palette of live action, stage magic, an original soundscape, elements of puppetry and projected animation, Monkey Baa's award-winning creative team have translated the whimsical world of the book to a live experience for audiences 3–8 years (and their families).

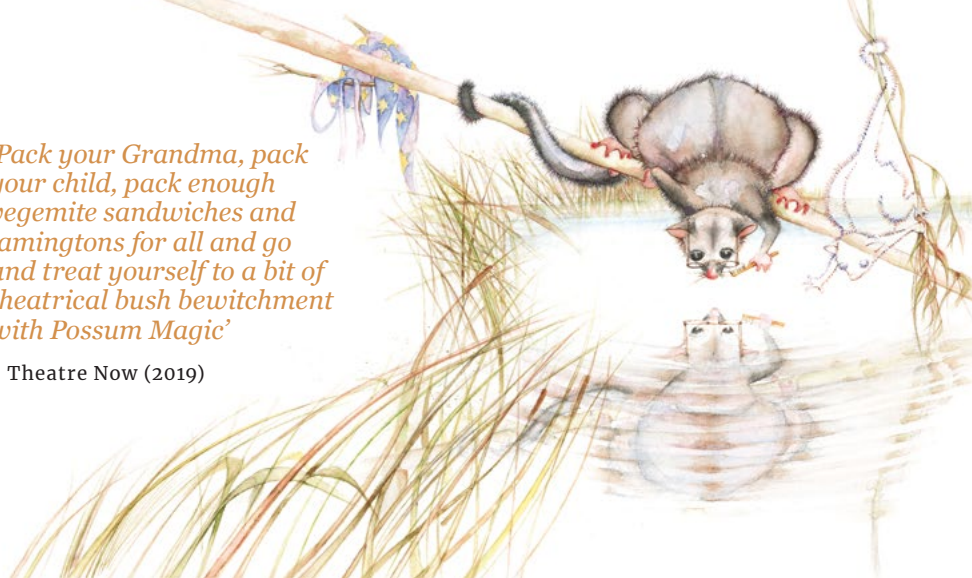
Grandma Poss loves making magic. She makes wombats blue and kookaburras pink. She makes dingoes smile and emus shrink. But one day, when danger arrives in the form of a snake, Grandma uses her most magical spell to make Hush invisible. Hush has many wonderful adventures. But being invisible isn't all it's cracked up to be, and Hush longs to see herself again. One problem. Grandma Poss can't find the spell to make Hush visible again. And then she remembers...this particular magic requires something more, something special, something to do with food...people food. *Possum Magic* takes us on a whimsical journey to cities around Australia to find the food that makes Hush visible again.





*'Pack your Grandma, pack your child, pack enough vegemite sandwiches and lamingtons for all and go and treat yourself to a bit of theatrical bush bewitchment with Possum Magic'*

- Theatre Now (2019)



## Possum Magic

6 x student workshops (delivered on campus)

Unlock your imagination and experience the magic of theatre in Monkey Baa's *Possum Magic* workshop. Explore the themes of the play and gain skills in improvisation, playbuilding and storytelling in a fun-filled Drama workshop that follows Grandma Poss and Hush's journey from picture book to the stage.

Delivered at schools. Workshops are delivered a few weeks in advance of the performance at your venue.

Only available to schools that have booked to see a performance.

**Schools to register their interest with dates/times confirmed in 2023.**



### WORKSHOPS

Primary

**6 x workshops**

**SUITABLE FOR**

Years K - 6

**CURRICULUM LINKS**

English, Drama, Music, Personal Development, Environment, Australiana

**DURATION**

45 minutes K - 2

60 minutes 3 - 6

FREE

Max 30 students per workshop

Illustrations copyright  
© Julie Vivas 1983



## WORKSHOP

Secondary

**Thursday  
7 December, 3pm  
& 4.30pm**

### SUITABLE FOR

13+

### CURRICULUM LINKS

Dance, First Nations

### DURATION

Community Workshop:  
60 minutes

MasterClass: 90 minutes

### COST

\$20.00

Minimum 8 and  
maximum 30 students

Students to bring  
comfortable clothing  
and water

Maximum limits per  
school will apply.

# Bangarra Dance Theatre Workshops

**Community Workshop, 3pm - 4pm**

This workshop is for Aboriginal and Torres Strait Islander youth; no dance experience is required. Free workshop.

**MasterClass, 4.30pm - 6pm**

This workshop is specifically for intermediate or experienced dance students. \$20 per student.

## About Bangarra Dance Theatre

Bangarra is an Aboriginal & Torres Strait Islander organisation and one of Australia's leading performing arts companies.

Led by Artistic Director Stephen Page, Bangarra is currently in their 33rd year but their dance technique is forged from over 65,000 years of culture, embodied with contemporary movement. The company's dancers are professionally trained, dynamic artists who represent the pinnacle of Australian dance. Each has a proud Aboriginal and/or Torres Strait Islander background, from various locations across the country.

Authentic storytelling, outstanding technique and deeply moving performances are Bangarra's unique signature.

*First Nations dance powerhouse Bangarra returns with a work inspired by the Kimberleys, telling the unique story of this Place and the survival of its People.*

*'Rich, evocative and powerful'*

- The Conversation

# bangarra

DANCE THEATRE

Glasshouse Port Macquarie and  
Bangarra Dance Theatre present

## SandSong: Stories from the Great Sandy Desert

Under the vast Kimberley sky, the red pindan dust stretches across the desert homelands of the Walmajarri, where the ancient knowledge of People and of Country is preserved through Songlines that have endured for hundreds of generations.

*SandSong* tells the unique story of this Place and the survival of its People.

Between the 1920s and 1960s, Aboriginal people were removed off their Country and forced into hard labour for no wages and only minimal rations. Despite this displacement and cultural disruption, the people of the Western Desert have maintained unbroken connection to their Land, keeping stories and kinship strong.

*SandSong* is created by Bangarra Dance Theatre in consultation with Wangkatjungka/Walmajarri Elders from the Kimberley and Great Sandy Desert regions.

This work honours the legacy of Ningali Josie Lawford-Wolf (1967 – 2019) and her family – past, present and future.

### PERFORMANCE

Secondary  
Friday 8 December,  
8pm

**SUITABLE FOR**  
Stages 4 – 6

**CURRICULUM LINKS**  
Contemporary Dance /  
Dance Theatre

**DURATION**  
85 minutes (no interval)

**COST**  
\$29.00 Student  
\$52.90 Teacher

An allocation of 50 seats available for Early Bird purchase by the schools via the EDU Booking Process. Maximum limits per school will apply.

Images: Daniel Boud





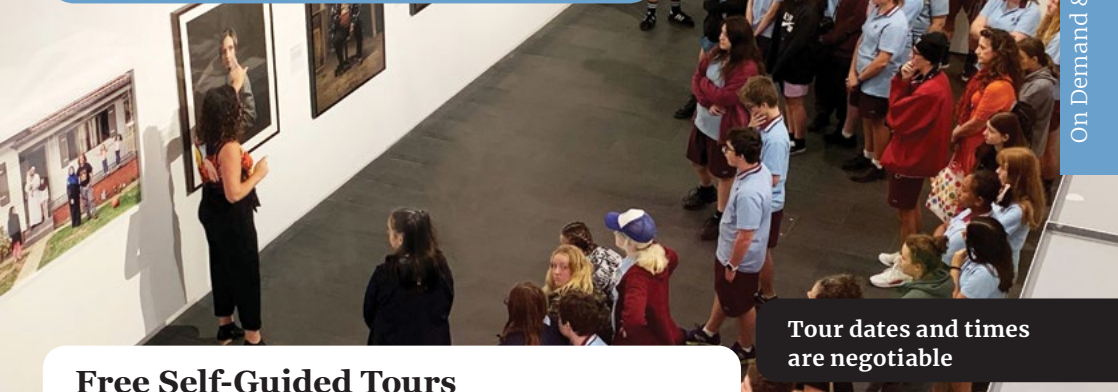
# On Demand & Dig & Deeper

  
**COASTLINE**  
Where your goals are ours

Principal Partner of the  
Education @ Glasshouse Program

# GALLERY ON DEMAND

Programming requested by you and specifically created for you and your students.



Tour dates and times are negotiable

## Free Self-Guided Tours

Self-guided tours are encouraged, however we ask that you complete a Booking Request Form, so that we can ensure that your visit does not clash with other activities or events, additionally this will give us time to provide you with any available educational resources.

Sign up to the gallery mailing list to receive further information of what's coming up.

## Guided Tours

Join our Gallery educators on an hour long guided tour, a fun and informative way to get excited about art. These interactive tailored tours assist in building confidence in discussing ideas, give in-depth insight into the exhibition, art theory as well as interactive age-specific exercises.

**SUITABLE FOR**  
Primary/Secondary

**DURATION**  
1 hour

**COST**  
\$5 per student

## Exhibition-based Workshops and Tours

If you are focusing on a particular exhibition, specific theme or curriculum/syllabus outcome, we can tailor a program to your needs. These custom-made sessions can accommodate your students and help to create a dynamic excursion and engaging art experience.

**SUITABLE FOR**  
Primary/Secondary

**DURATION**  
2 hours (30 minute Gallery tour, 90 minute workshop)

**COST**  
\$15 per student

To book any of the Education tours please email [education@glasshouse.org.au](mailto:education@glasshouse.org.au)

**RESOURCE**

Primary/  
Secondary

**SUITABLE FOR**  
Years 3 & 4

**CURRICULUM**  
**LINKS**

HSIE

FREE

In school resource

**Heritage in a Box**

The Heritage in a Box is a free education resource that has been developed as an aid for teachers in the instruction of Port Macquarie's local Colonial history in accordance with Stage 2 of the HSIE syllabus.

The kit includes a comprehensive teacher's guide providing historical detail, ideas for student activities, classroom posters, reference books, DVDs and excursion ideas. In addition to the kit is a box of historic artefacts.

Schools are able to book out the box of museum objects for use in the classroom.

Why not use this in association with a visit to the Glasshouse to view the archaeological remains and a stop at the nearby Port Macquarie Museum?

To hire this resource email  
[education@glasshouse.org.au](mailto:education@glasshouse.org.au)







## Contemporary Practice Outreach

Ever feel like it can be hard to inspire students to extend their ideas, themes, materials, concepts etc.

Would you like an opportunity to engage with one of our contemporary artists featured within our Exhibition Program?

Our Contemporary Practice Outreach Program will link you (the educator) and your students to new opportunities to engage with artists featured in our Exhibition Program. Working with the Gallery Curator, this program will be tailored to your needs.

Please express your interest by downloading our booking request form and emailing completed form to [education@glasshouse.org.au](mailto:education@glasshouse.org.au).

### EXHIBITION

Secondary

**Expression of interest**

### SUITABLE FOR

Years 7–12

### CURRICULUM LINKS

Creative Arts, Visual Arts, Visual Design, HSIE

Image credit: 2020 Artist in Resident, Asher Milgate, Photography Workshop



## ARTIST IN RESIDENCE

Primary/  
Secondary

Friday 14 -  
Sunday 23 April

SUITABLE FOR  
Years 7-12

Contemporary Practice  
Outreach

Express your interest.

Programs could  
include talks,  
workshop, mentoring,  
school visit

## PHILJAMES

The Gallery is dedicated to showcasing Australian contemporary arts practice, creating opportunities for contemporary artists to connect with our regional audiences and vice versa.

Our Artist in Residence program connects our community with visiting artists.

@philjames

Philjames is represented by Chalk Horse Gallery Sydney and Nicholas Thomson Gallery Melbourne.

## ABOUT OUR ARTIST IN RESIDENCE

Philjames, originally from Port Macquarie, has held solo exhibitions since 2010. He has a Bachelor of Fine Arts (Printmaking) from the National Art School, Sydney (2002). Philjames' work has been included in group exhibitions in Sydney, Melbourne, Newcastle, Adelaide and internationally in Christchurch NZ, New Orleans USA and Beijing China.

Philjames has been a finalist in the Sir John Sulman Prize (2020, 2018 and 2017), the Mosman Art Prize (2019), the Hazelhurst Art on Paper Award (2019, 2017), the Shirley Hannah National Portrait Award (2018), the Blake Prize (2018, 2014, 2005), The John Fries Memorial Art Prize (2012) and The Brett Whiteley Travelling Art Scholarship (2006, 2005). He is a finalist in the 2021 Wynne Prize.



Philjames, *Plebian Delight*, 2017 oil on vintage offset lithograph 22x17 cm



## Education Kits and Online Resources

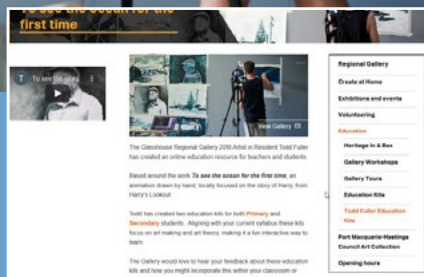
Many of our featured exhibitions have Education Kits that dive deeper into themes, context and specific artists. These are free resources available on our website in the Visual Arts page.

### Todd Fuller Online Resource

The Glasshouse Regional Gallery 2018 Artist in Resident, Todd Fuller, has created an online education resource for teachers and students.

Based around the work *To see the ocean for the first time*, an animation drawn by hand, locally focused on the story of Harry, from Harry's Lookout.

Todd has created two Education Kits for both Primary and Secondary students. Aligning with your current syllabus these kits focus on art making and art theory, making it a fun interactive way to learn.

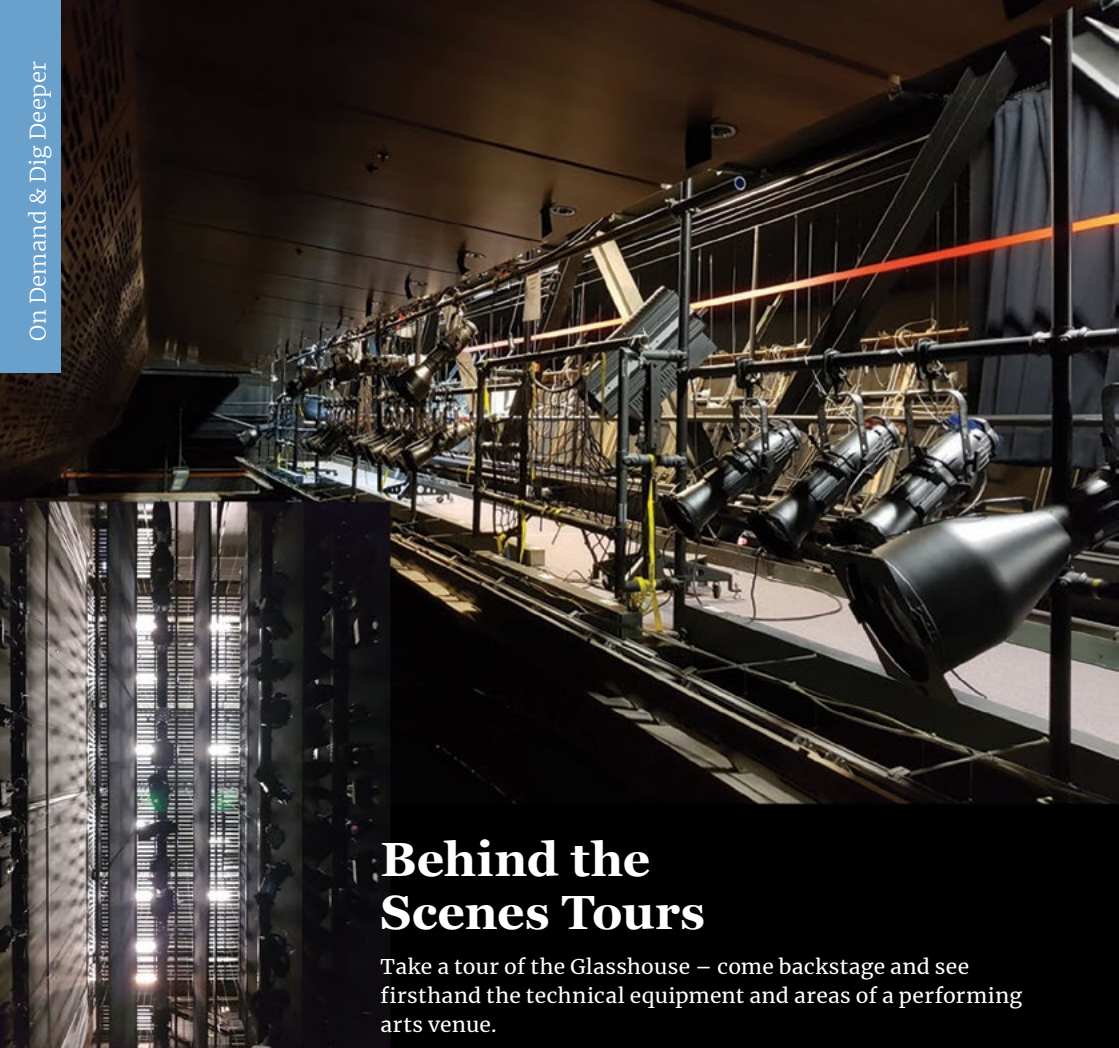


Please share your education experiences

[@glasshousepmq](https://www.instagram.com/glasshousepmq)  
[#glasshouseregionalgallery](https://www.instagram.com/glasshouseregionalgallery)

Image credit: Artist in Resident Todd Fuller working on *To see the ocean for the first time*, 2018, animation. Courtesy of the Artist and MAY SPACE, Sydney.





## Behind the Scenes Tours

Take a tour of the Glasshouse – come backstage and see firsthand the technical equipment and areas of a performing arts venue.

Expect to see how a variable speed automated fly system works, have a closer look at the latest in moving light technology, learn about stage machinery that comes in various designs – you will see the full scope of what the Glasshouse has on offer as a performing arts venue compared to other venues in the region.

Understand what Prompt and Off-Prompt mean? Our experienced and knowledgeable Tour Guides will demystify the magic of the theatre in our Behind the Scenes Tours, customisable to your area of interest.

Please contact us on [education@glasshouse.org.au](mailto:education@glasshouse.org.au) and let's start a conversation.

Note: For safety reasons, enclosed footwear must be worn.

### TOURS

Primary/Secondary

90 minutes

\$10 per student

Max 20 students

Bookings essential

Contact us to discuss suitable dates and times



## Relaxed performances

The Glasshouse will work with Producers to offer "Relaxed Performances" where possible. It's all about communicating with us in advance so we can have the appropriate conversations with the touring company. Relaxed Performances may include:

- House lights up 20% so it's not too dark
- Reduced level of sound – kids can bring their headphones to reduce noise if required
- Special attention from Ushers to assist carers, the Level 2 Foyer can be used as a "Chill Out Space" for those who feel overwhelmed or to take a break

- The "Crying Room" can be used for students who feel overwhelmed, but do not want to miss any part of the show (the stage is visible with audio loop to room)
- AUSLAN interpreted performances could be arranged (advance notice is required to allow an AUSLAN Interpreter to familiarise themselves with the production)
- Tactile Tours may be available. (Please enquire well in advance. If a child is sight impaired, a tactile tour of some elements of the set, props or costume before the production starts can greatly enhance their experience)

## Resources

Resources are available to download from the Glasshouse website to assist you with your visit. Where available, these include worksheets, activities and Education Kits.

*Would you like to have input into the Glasshouse Education Theatre Program?*

## Education Program Brains Trust - Theatre

Would you like to be more involved in the Glasshouse's Education Theatre Program? Sign up to be a part of our EDU Brains Trust. From time to time we will make contact to get your opinion and feedback. The aim is to give you more performances and engagement experiences that complement your teaching. It also enables us to better understand any barriers to participation as we know our regional schools have many competing priorities, and accessibility considerations around travel, show times, people resources and funding.



Contact us on (02) 6581 8888 or [education@glasshouse.org.au](mailto:education@glasshouse.org.au)

# coastline CUBS

## SCHOOL VISIT

We offer a 'Coastline Cubs School Visit Program' which helps educate young students on how to best manage their money and guide them to make sensible and worthwhile financial decisions in the future.



Finance is non-intuitive, and to work towards financial literacy, we believe introducing students to the world of finance will prove to be a beneficial endeavour. This program provides students with a hands-on practical learning experience on the reality of banking and managing finances.

We offer 'in-store' visits and have added 'in-school' visits this year as we understand it is not always easy bringing a class into the branch (as exciting as it is).

During the 'in-store' visits, students experience transactional-based activities such as using a coin counting machine to exchange five x\$1 coins into a \$5 note, which they keep. This initiative is supported by the Coastline Community Foundation. Students are then engaged in a guided tour where they are shown the big safe, spin money through the note counter and partake in fun money-based

learning activities assisted by our staff.

Our 'in-school' visit to our program has been amended to be suitable for a classroom- still involving REAL money and other engaging learning activities.

Each student is presented with a goodie bag and certificate at the conclusion of the excursion.

The Coastline Cubs School Visit Program correlates with outcomes in the NSW Education Standards Authority Mathematics syllabus and the Early Years Learning Framework.

To register your school's interest for 2023 visits, please email us at [info@coastline.com.au](mailto:info@coastline.com.au)

  
**COASTLINE**  
*Where your goals are ours*





# Planning your visit

Access educational resources and information to assist with planning your visit to the Glasshouse on our website. A venue and safety information sheet is available to assist you with planning your excursion.

Please advise the Glasshouse of any special needs or seating requirements prior to your visit so we can ensure every student has a great experience.



## Keep in touch

Keep in touch with the latest education news and events through the Glasshouse Education E-News. To join the list, please email your details to [education@glasshouse.org.au](mailto:education@glasshouse.org.au)

## How to book

A Booking Request Form is required for all visits to the Glasshouse. Booking Forms can be downloaded from the Glasshouse website:

[Performing Arts Booking Form](#) | [Visual Arts Booking Form](#)

Complete the Education @ Glasshouse Booking Form and submit via one of the following options:

Email: [education@glasshouse.org.au](mailto:education@glasshouse.org.au)

Mail: Education @ The Glasshouse, PO Box 84, Port Macquarie NSW 2444

In person: Cnr Hay and Clarence Streets, Port Macquarie

Please be aware that workshops and performances book out quickly. We have a broad network of schools who travel long distances and ask that schools located within close proximity be flexible with their booking times.

### DISCLAIMER

Every effort is made to ensure that performance dates, times, prices and other information contained in this brochure are correct at time of printing. Program dates and times are subject to change, amendment, cancellation and postponement without notice. When booking and purchasing tickets, it is advisable to confirm that there have been no variations to the schedule.

# EDUCATION @ GLASSHOUSE

2023 Program



Principal Partner of the  
Education @ Glasshouse Program

(02) 6581 8888

[education@glasshouse.org.au](mailto:education@glasshouse.org.au)

30-34 Clarence Street,  
Port Macquarie